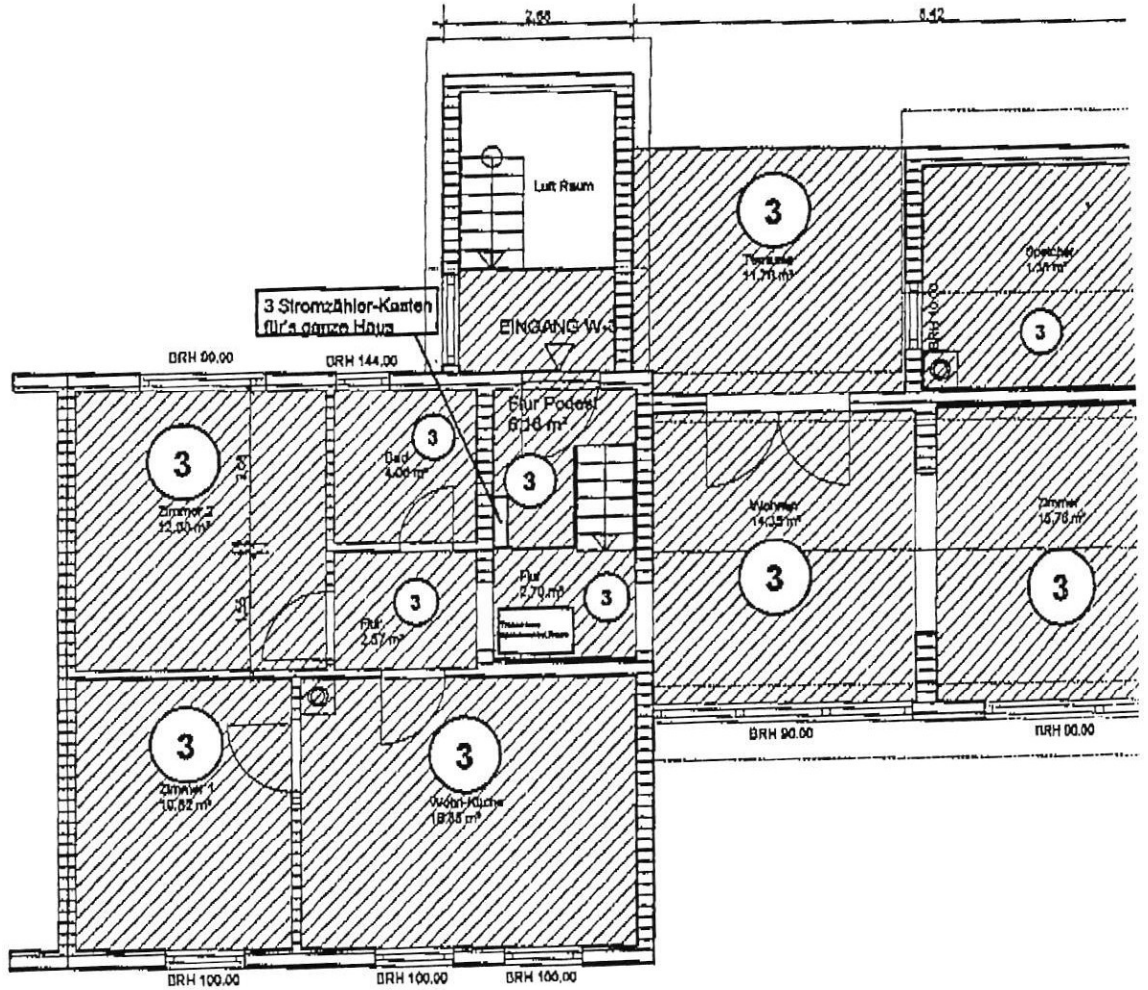


16.37									
5.27			2.88		3.85			4.57	
1P	3.51	1P	1.76	2.20	4.33	4.21			
1.02	1.75	1.00	76	74	2.88	3.85	4.57		
1.20		75							

12.04	4.04	4.04	2.74	1.20	1.20
8.00	3.75	8.00	3.65	2.4	2.4



1.37 ⁵	1.10	1.83 ⁵	1.10	72 ⁵	1.10	1.01	3.65	1.03	2.50
1.26		1.26		1.26			75	75	
1P	3.02	1P	4.75	3.94	8.00	4.12			
8.25								8.00	
16.37									