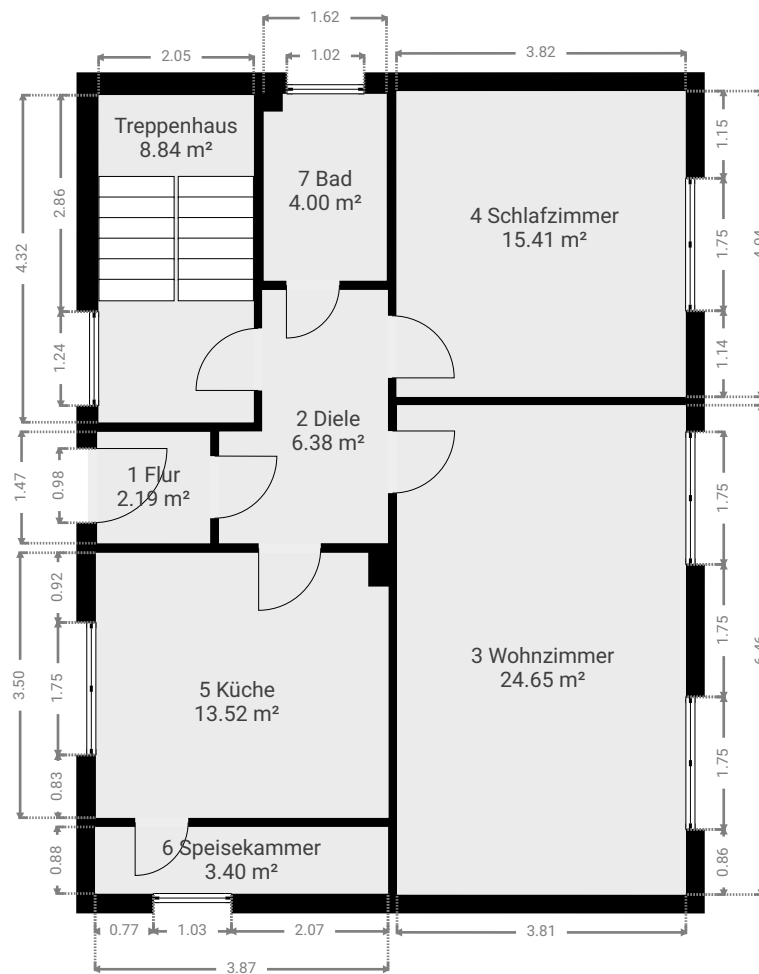
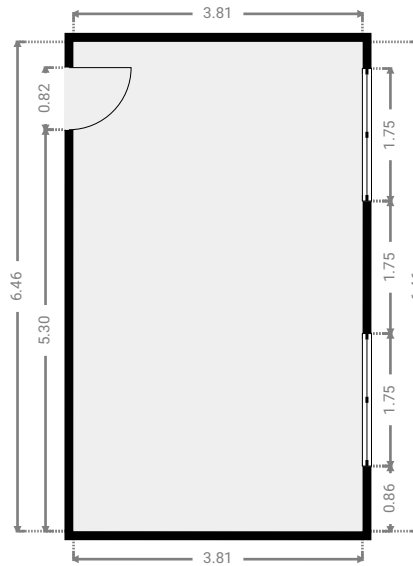
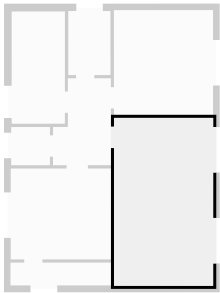


▼ Erdgeschoss



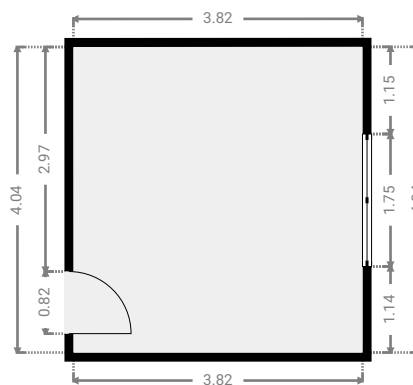
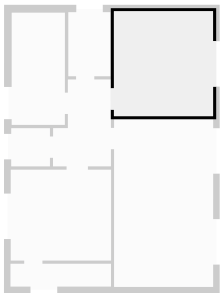
▼ 3 Wohnzimmer Erdgeschoss

BREITE: 3.82 m · LÄNGE: 6.46 m
BEREICH: 24.65 m² · UMFANG: 20.55 m



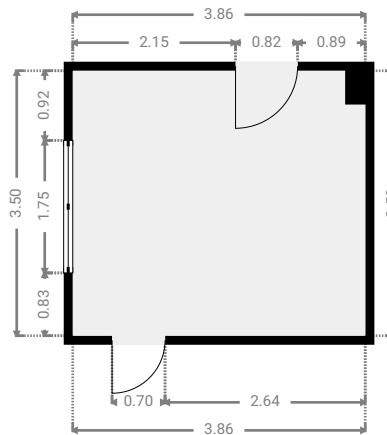
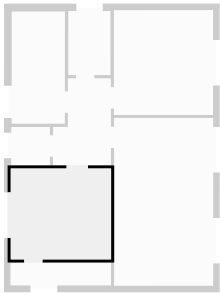
▼ 4 Schlafzimmer Erdgeschoss

BREITE: 3.82 m · LÄNGE: 4.04 m
BEREICH: 15.41 m² · UMFANG: 15.71 m



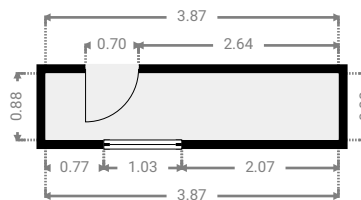
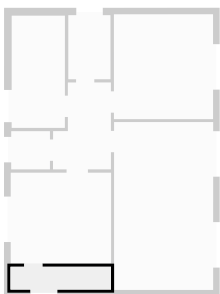
▼ 5 Küche Erdgeschoss

BREITE: 3.86 m • LÄNGE: 3.50 m
BEREICH: 13.52 m² • UMFANG: 14.72 m



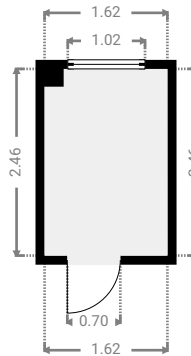
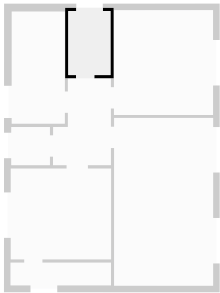
▼ 6 Speisekammer Erdgeschoss

BREITE: 3.87 m • LÄNGE: 0.88 m
BEREICH: 3.40 m² • UMFANG: 9.50 m



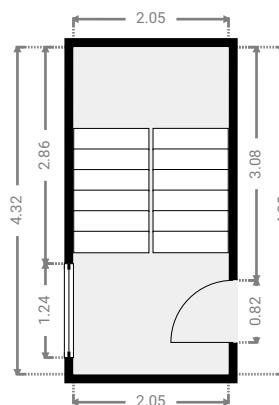
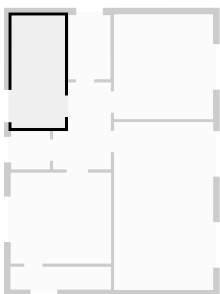
▼ 7 Bad Erdgeschoss

BREITE: 1.62 m • LÄNGE: 2.47 m
BEREICH: 4.00 m² • UMFANG: 8.17 m



▼ Treppenhaus Erdgeschoss

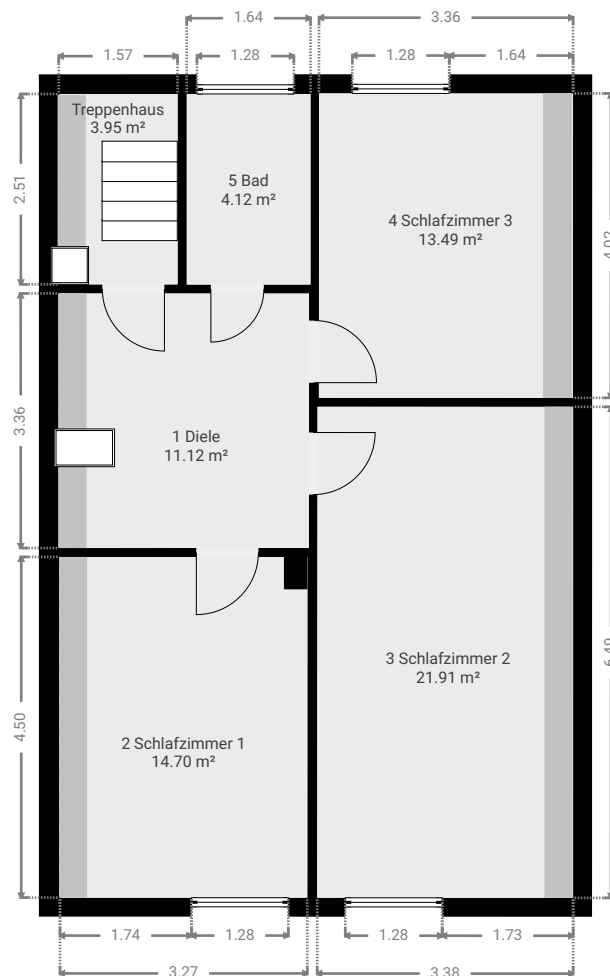
BREITE: 2.05 m • LÄNGE: 4.32 m
BEREICH: 8.84 m² • UMFANG: 12.73 m



Grundrissdarstellung Einfamilienhaus

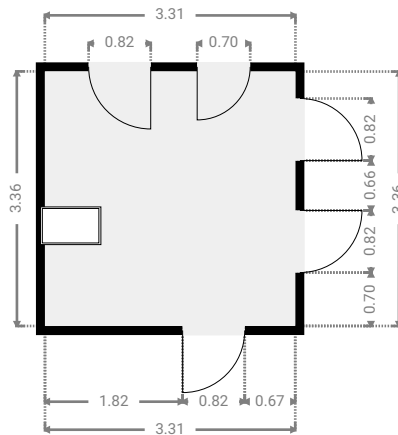
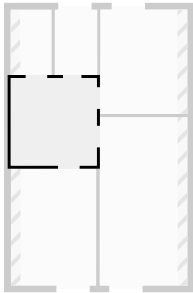
Friesenweg 5, 01979 Lauchhammer, Brandenburg, DE
ETAGEN: 2

▼ Dach



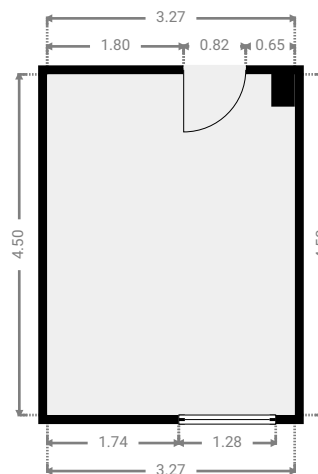
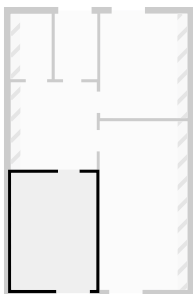
▼ 1 Diele Dach

BREITE: 3.31 m • LÄNGE: 3.36 m
BEREICH: 11.12 m² • UMFANG: 13.34 m



▼ 2 Schlafzimmer 1 Dach

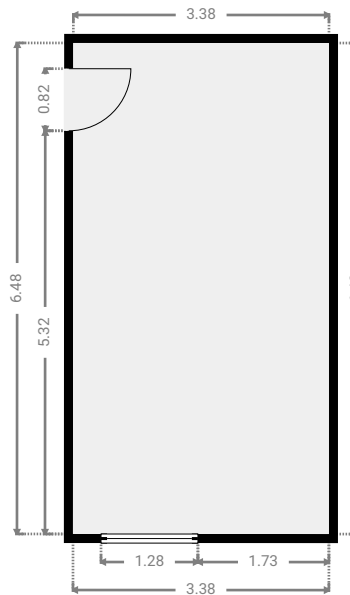
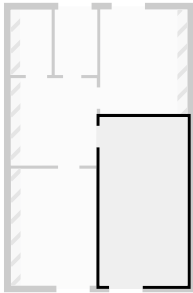
BREITE: 3.27 m • LÄNGE: 4.50 m
BEREICH: 14.70 m² • UMFANG: 15.53 m



▼ 3 Schlafzimmer 2

Dach

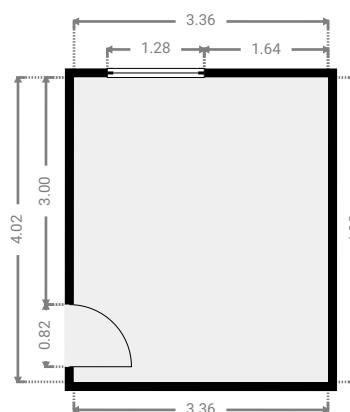
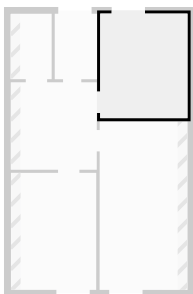
BREITE: 3.38 m · LÄNGE: 6.48 m
BEREICH: 21.91 m² · UMFANG: 19.73 m



▼ 4 Schlafzimmer 3

Dach

BREITE: 3.36 m · LÄNGE: 4.02 m
BEREICH: 13.49 m² · UMFANG: 14.75 m

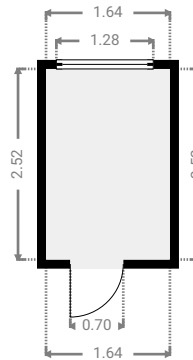
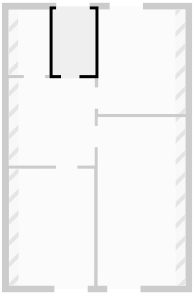


Grundrissdarstellung Einfamilienhaus

Friesenweg 5, 01979 Lauchhammer, Brandenburg, DE
ETAGEN: 2

▼ 5 Bad Dach

BREITE: 1.64 m • LÄNGE: 2.52 m
BEREICH: 4.12 m² • UMFANG: 8.31 m



▼ Treppenhaus Dach

BREITE: 1.57 m • LÄNGE: 2.51 m
BEREICH: 3.95 m² • UMFANG: 8.17 m

