

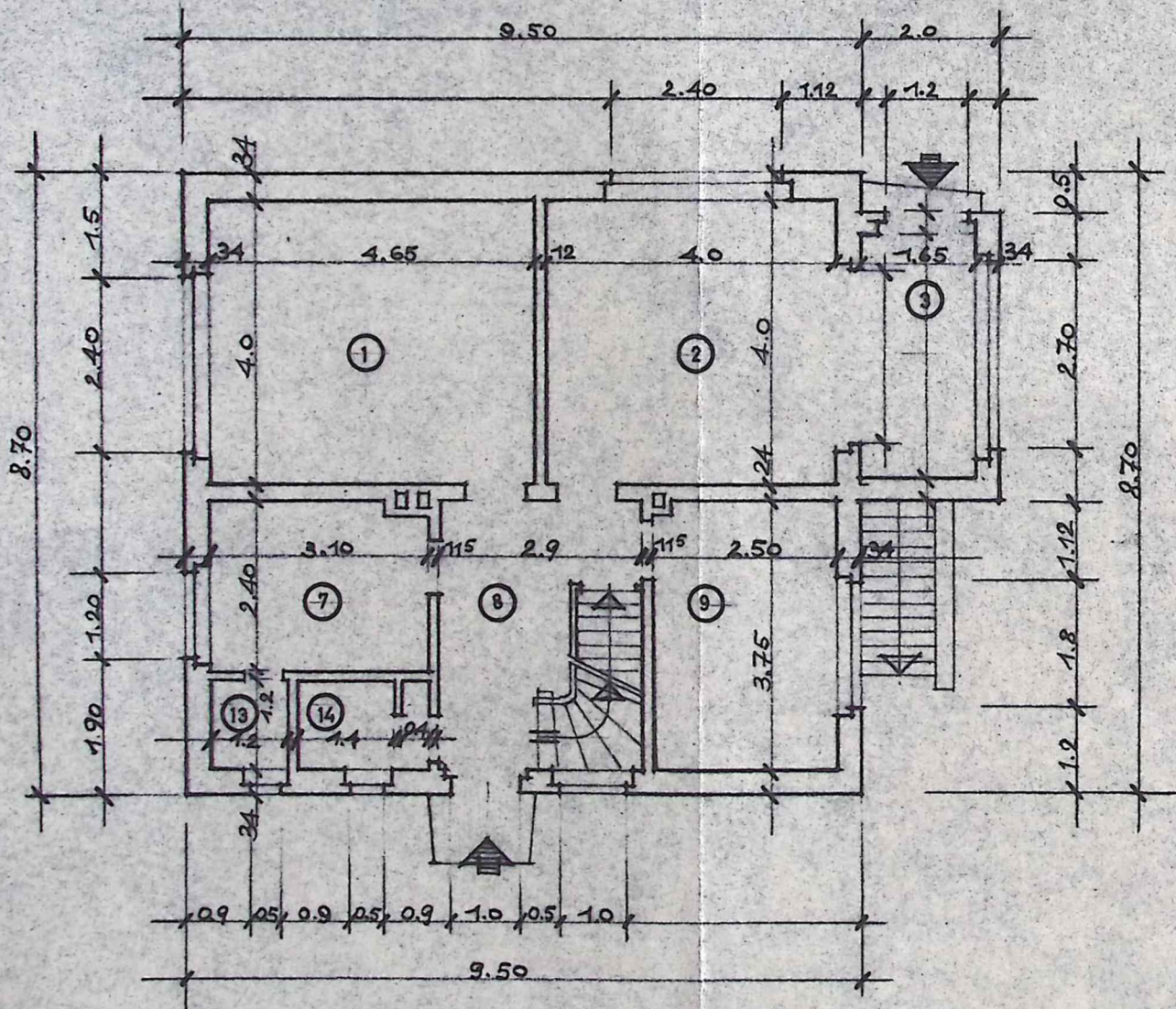
Anlage zum Verbleib
vom 6. 2. 57

WOHNFÄCHEN NACH DIN 283

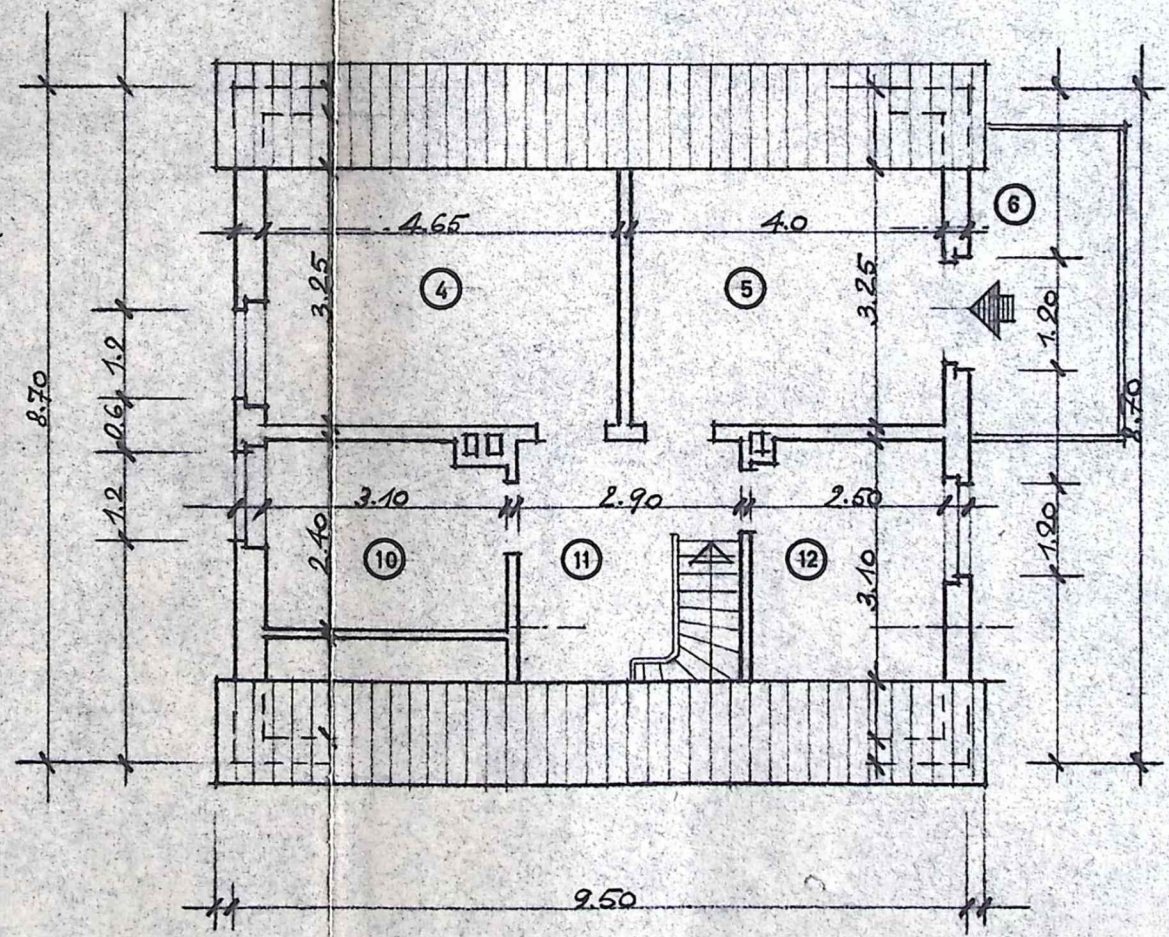
| | | | |
|----|---------------|---|----------------------|
| 1 | ARB.-ZM. | = | 18.60 M ² |
| 2 | WOHN-ZM. | = | 16.00 M ² |
| 3 | VERANDA | = | 5.60 M ² |
| 4 | SCHLAF-ZM. | = | 13.30 M ² |
| 5 | GROSSELT. | = | 11.40 M ² |
| 6 | BALKON | = | 2.00 M ² |
| 7 | KÜCHE | = | 7.45 M ² |
| 8 | DIELE | = | 7.80 M ² |
| 9 | KINDER-ZM. | = | 9.70 M ² |
| 10 | BAD | = | 7.45 M ² |
| 11 | FLUR | = | 5.75 M ² |
| 12 | KINDER | = | 5.80 M ² |
| 13 | SPEISEK.M. | = | 1.44 M ² |
| 14 | W.C. + BES.K. | = | 2.16 M ² |
| 15 | | | |

ZUS. = 114.45 M²

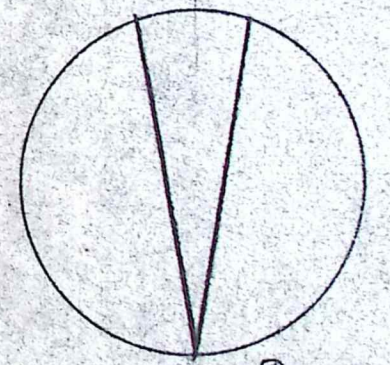
| | | |
|-------------------|---|-----------------------|
| WOHN- u. SCHL.-R. | = | 80.40 M ² |
| KÜCHE | = | 7.45 M ² |
| NEBENRÄUME | = | 26.60 M ² |
| ZUS. | = | 114.45 M ² |



ERDGESCHOSS - GRUNDRISS



OBERGESCHOSS - GRUNDRISS



NORD

Buchholz
Klaus-Jürgen Haegele 8/1/57