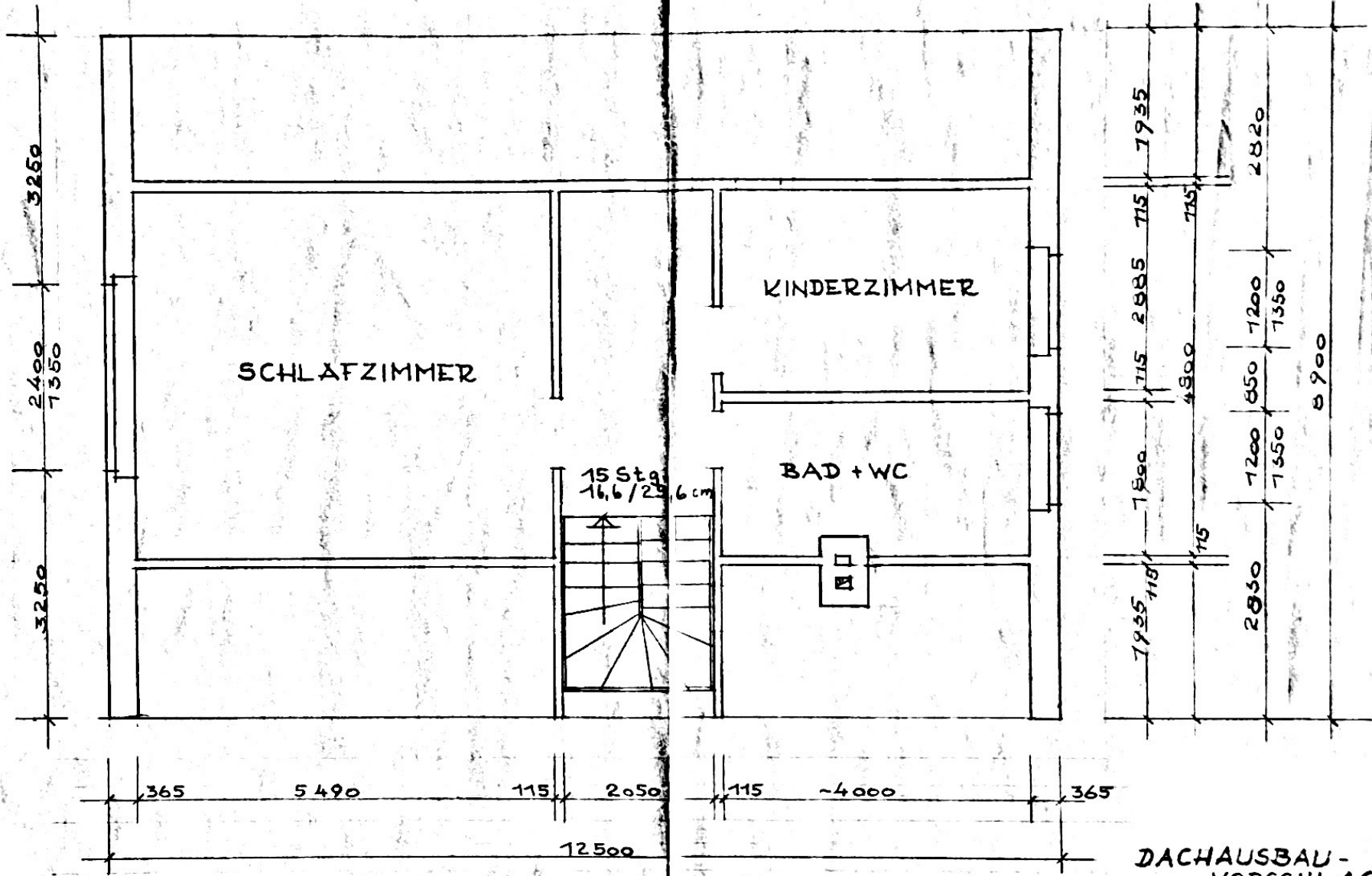


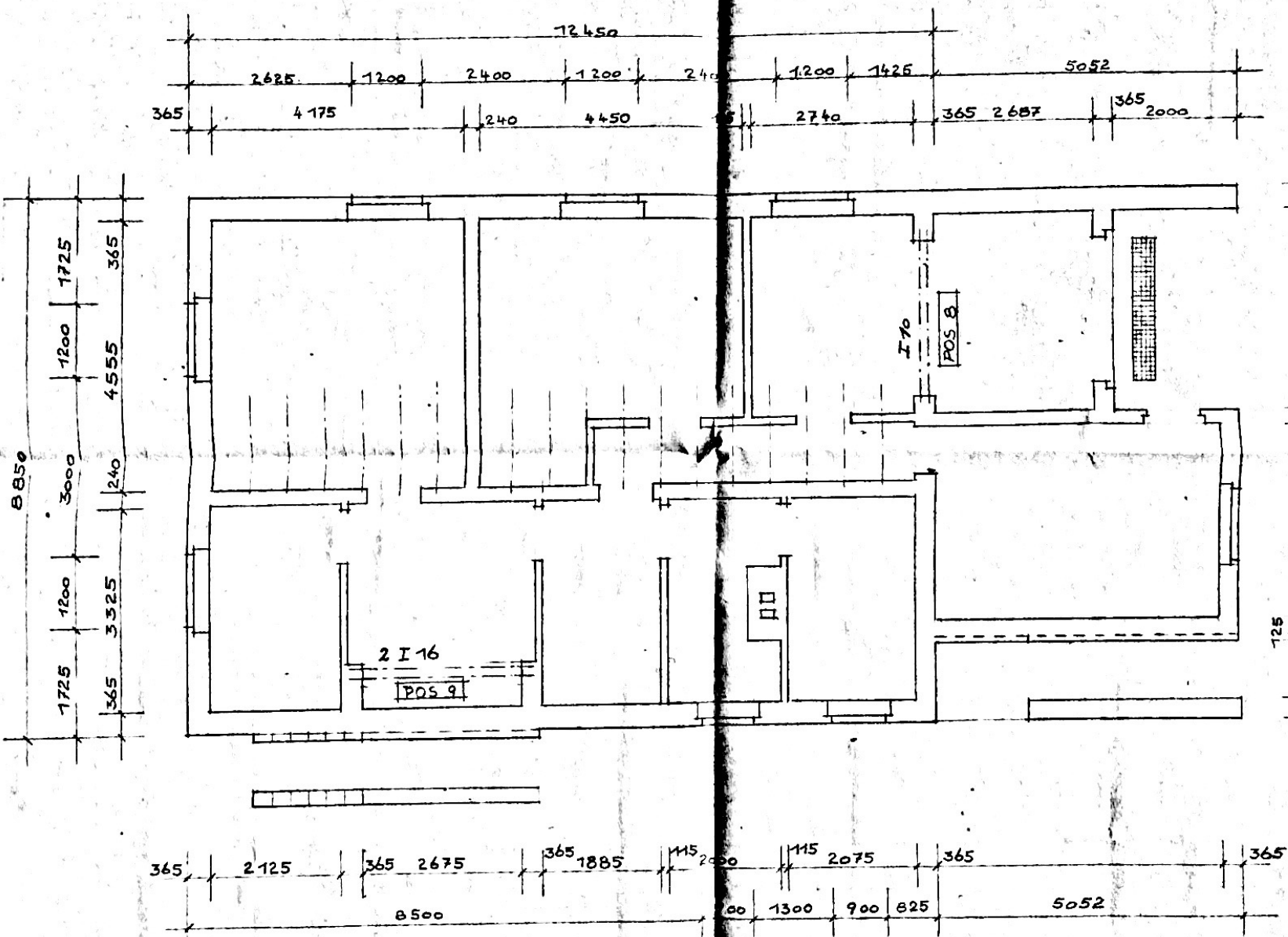
GRUNDRISS
M = 1:50

DACHGESCHOSS

ALLE INNENWÄNDE WERDEN IN
LANGLOCH-ZIEGEL AUSGEFÜHRT

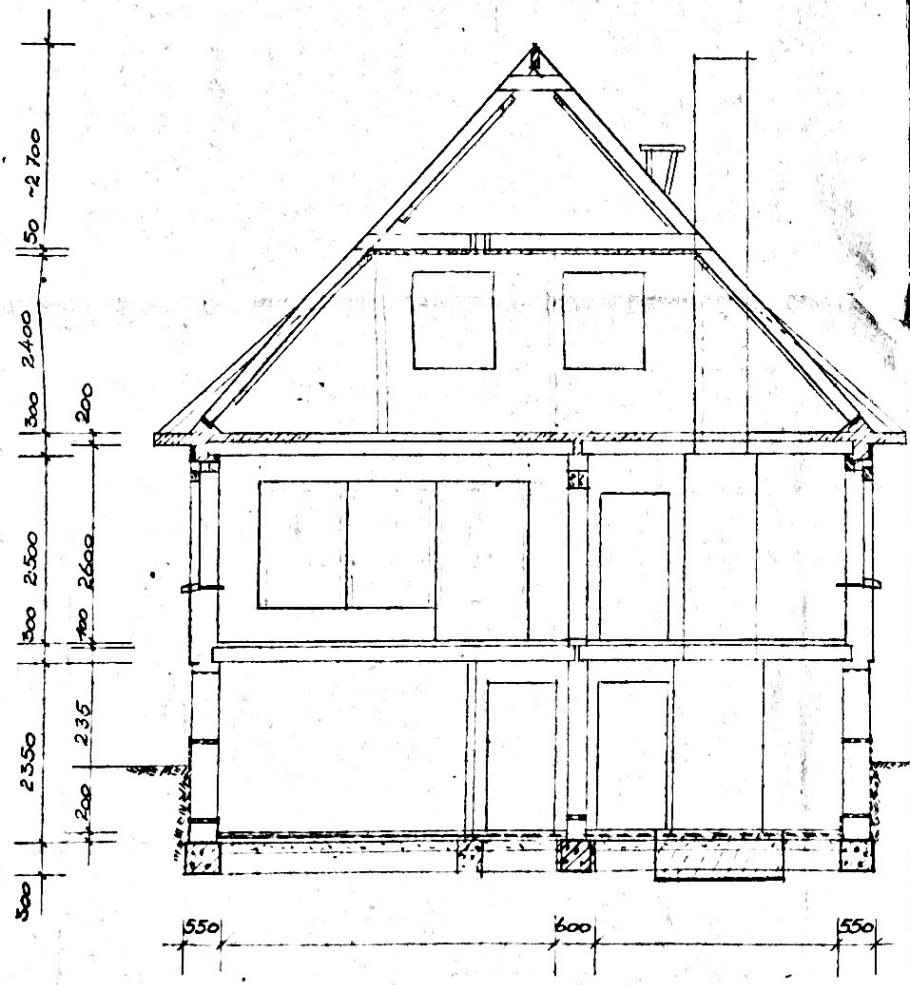


DACHAUSBAU-
VORSCHLAG

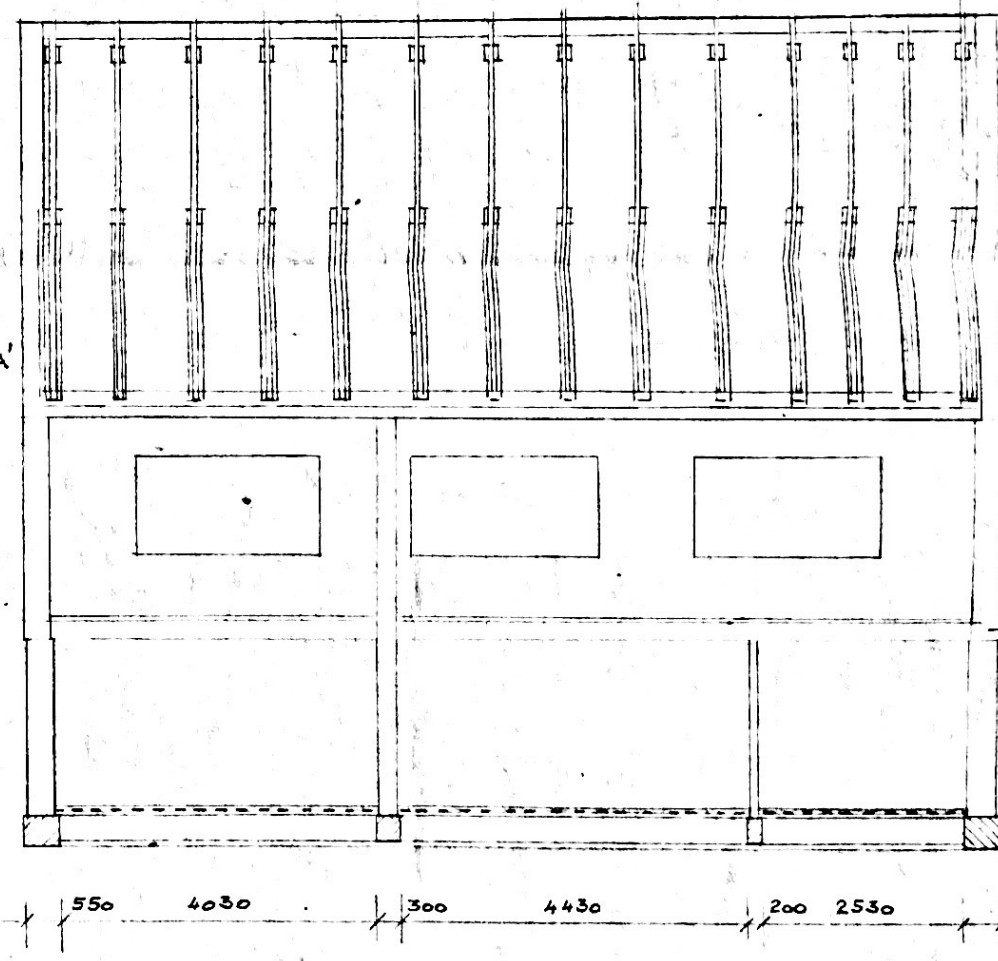


KELLERGE (CHOSS)
M 150

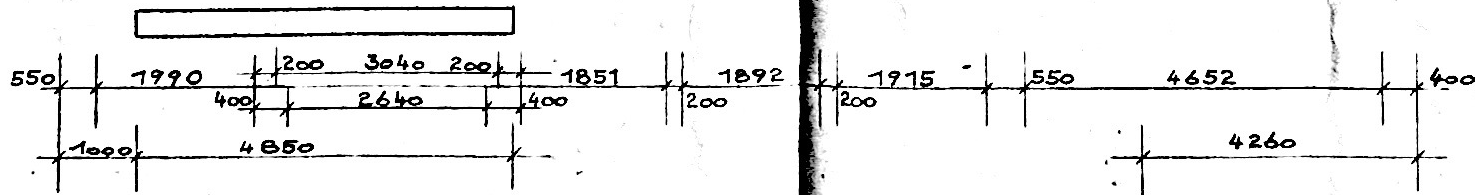
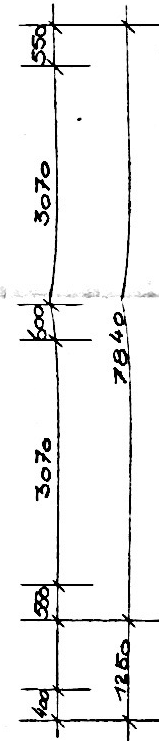
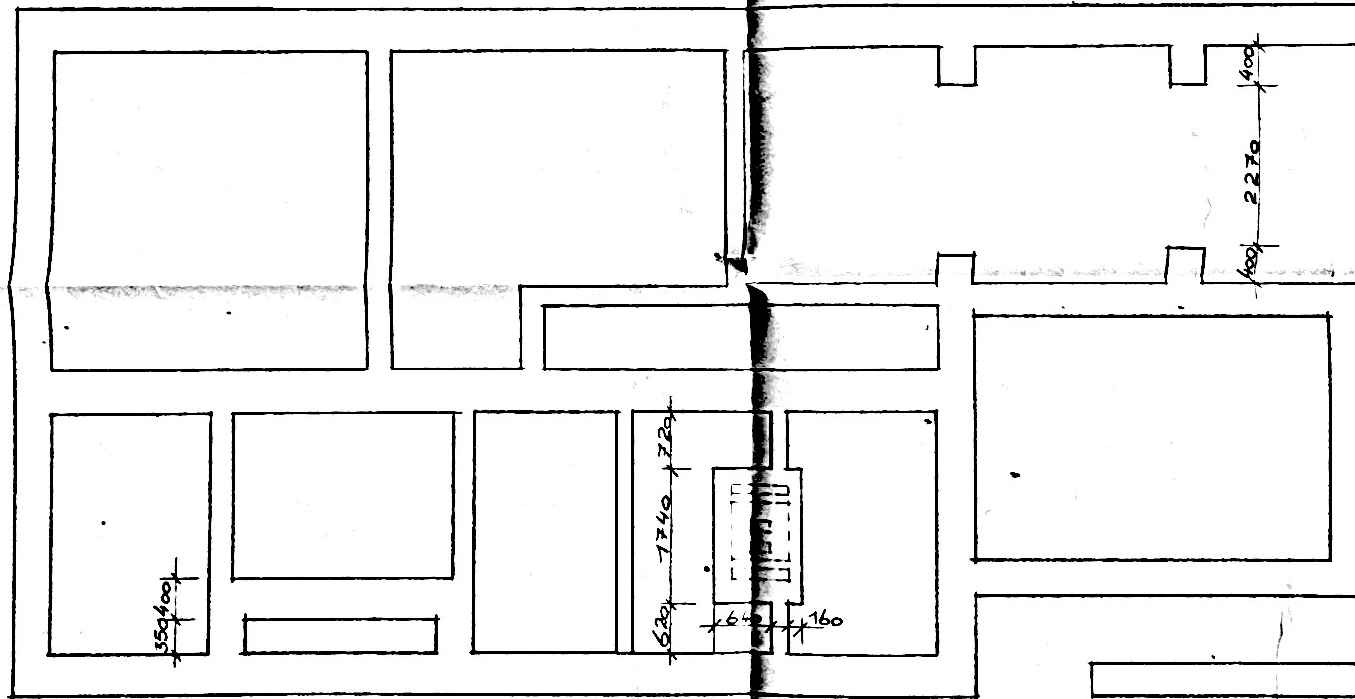
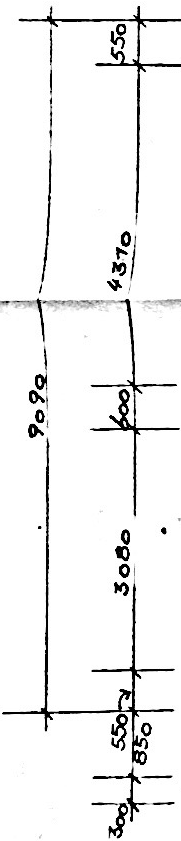
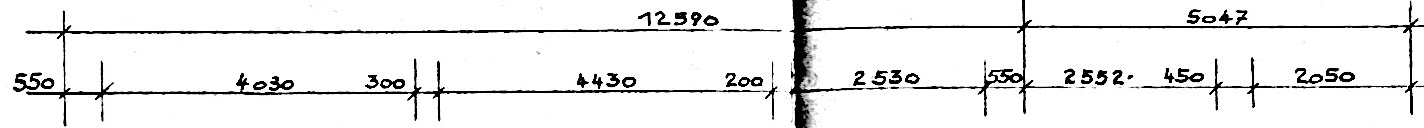
SCHNITT A-B
M 1:50



DETAIL A

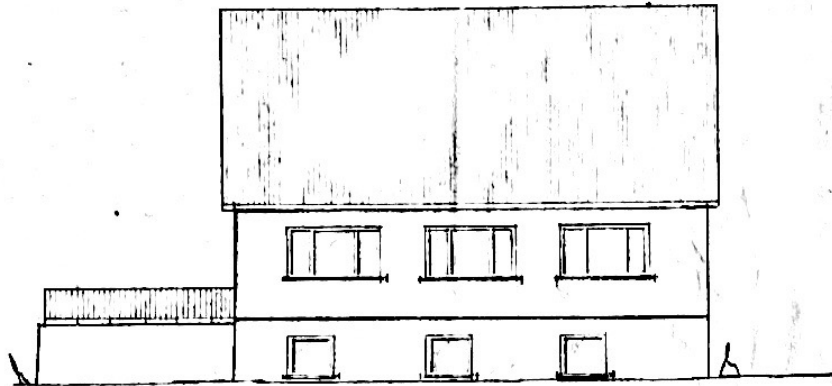


h

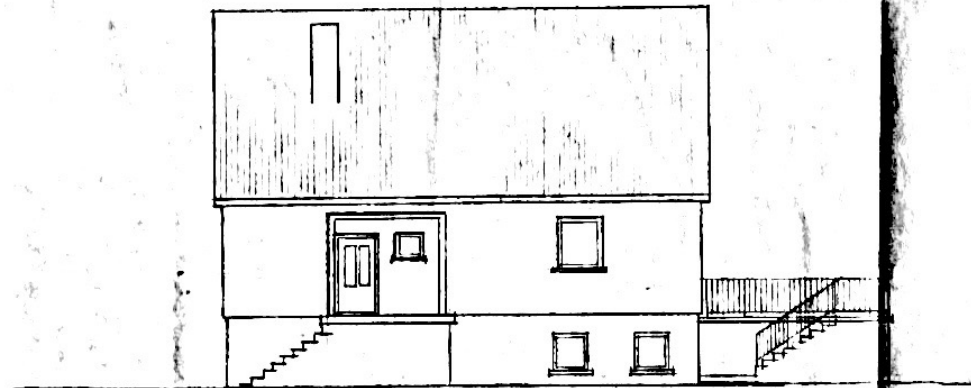


-Fundamentplan -
M 1:50

28.6.1975 L-6-



SÜD-ANSICHT



NORD-ANSICHT



OST-ANSICHT



WEST-ANSICHT