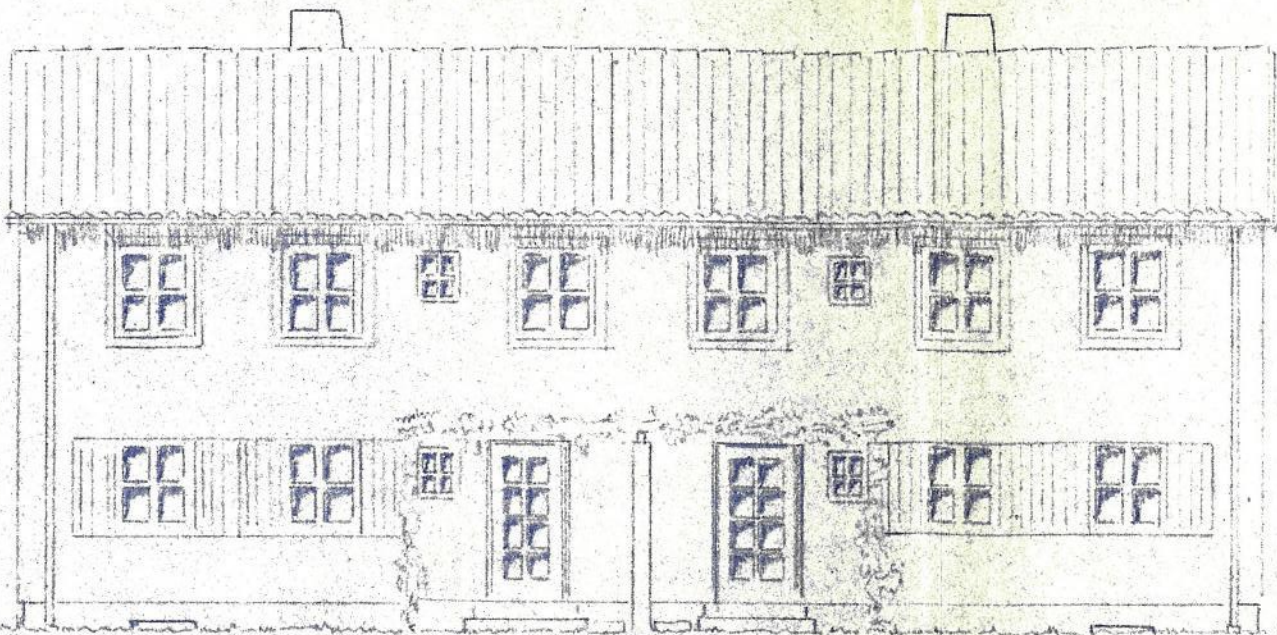
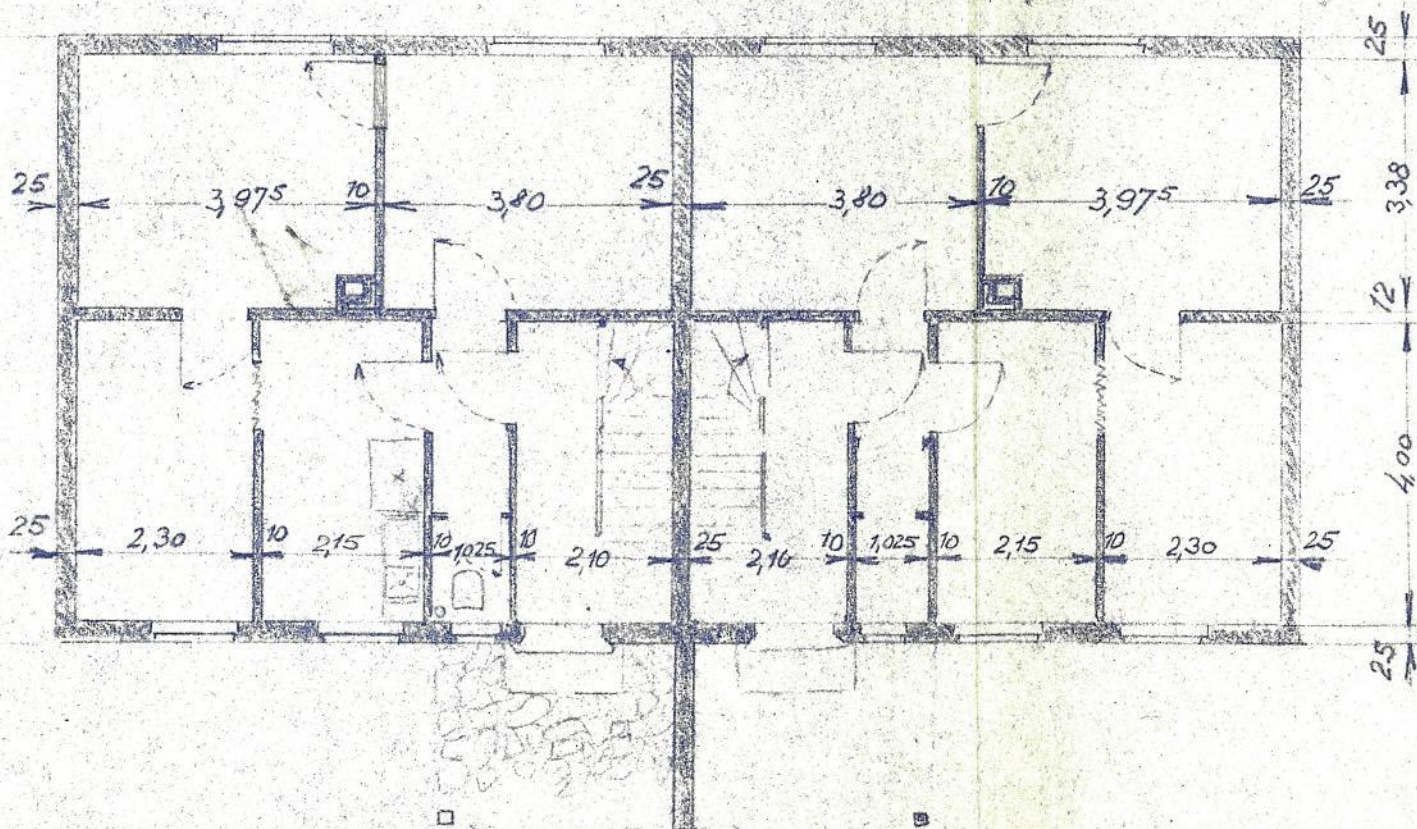


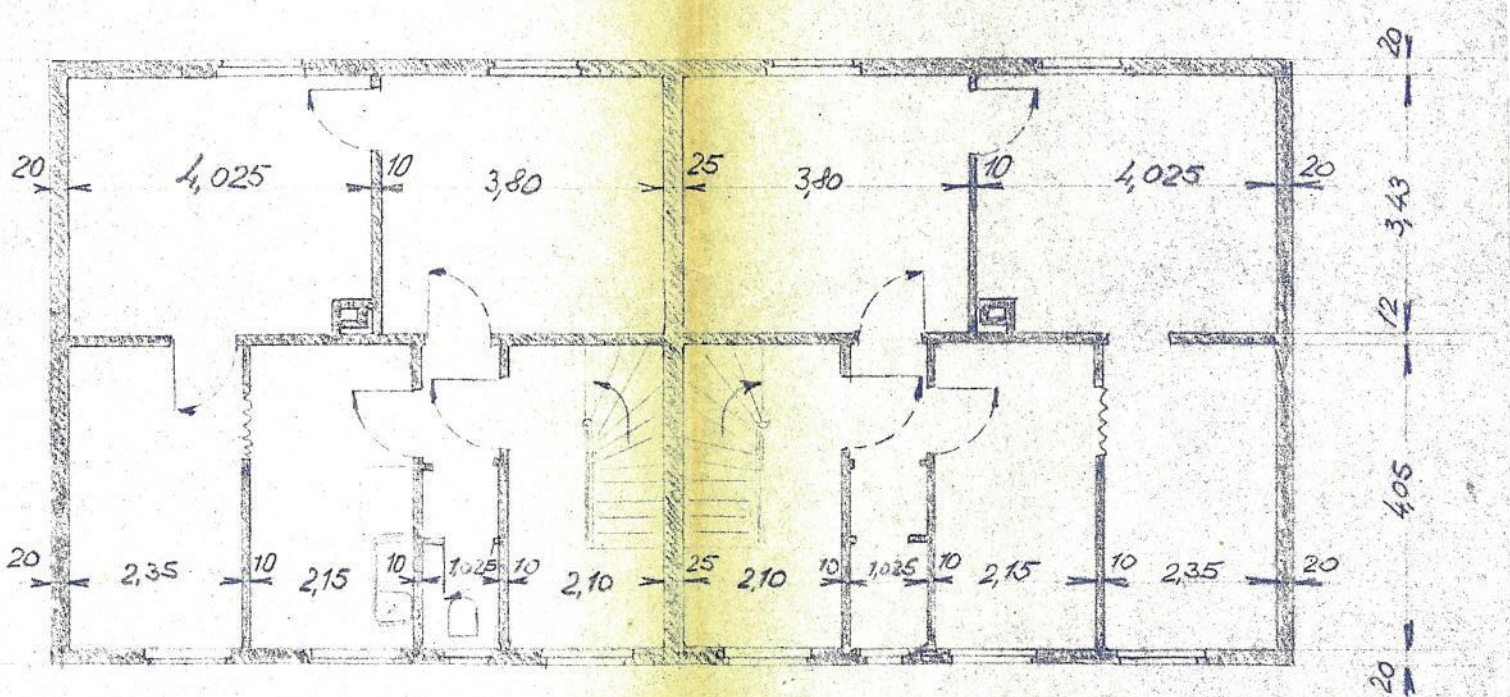
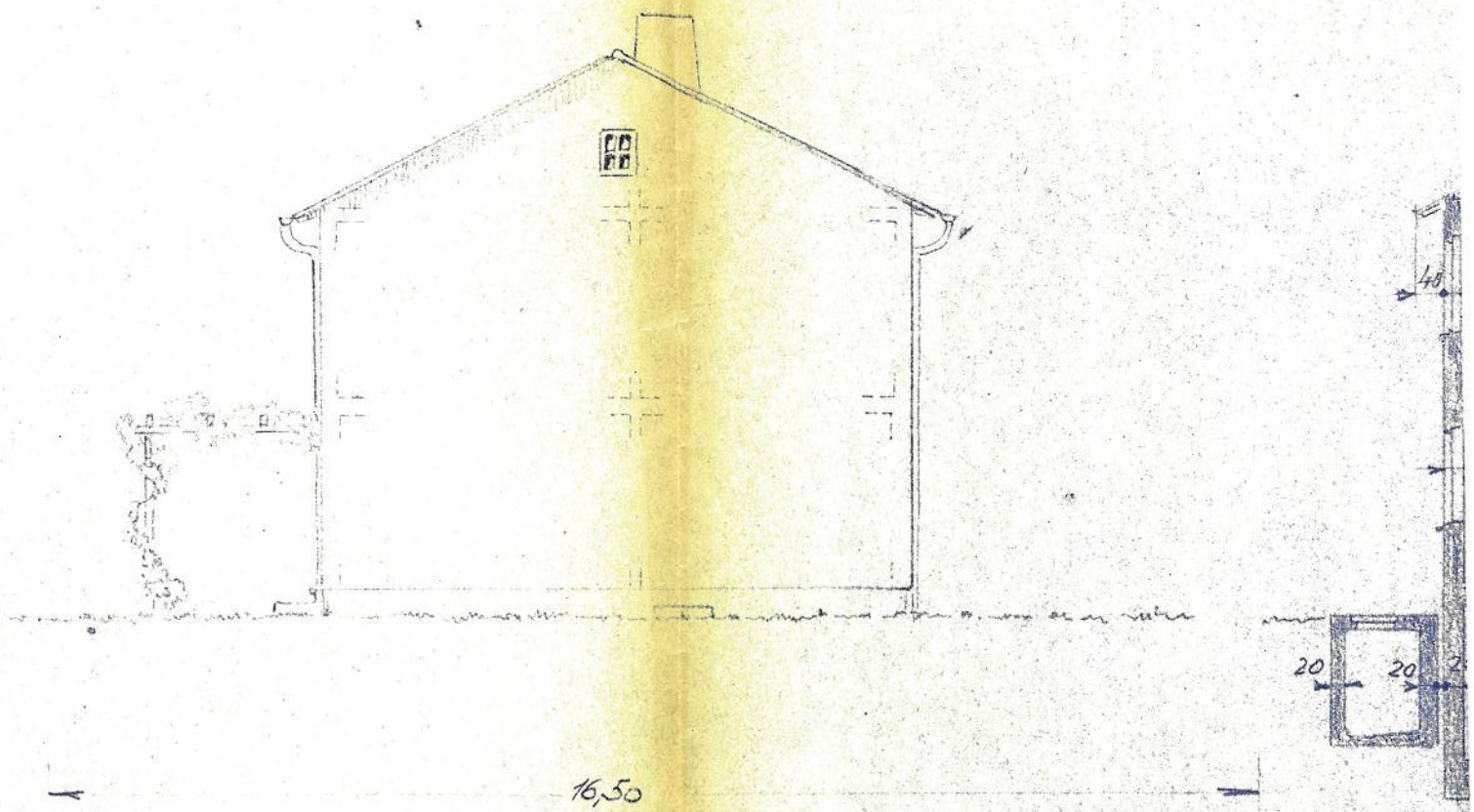
Untergeschoss.



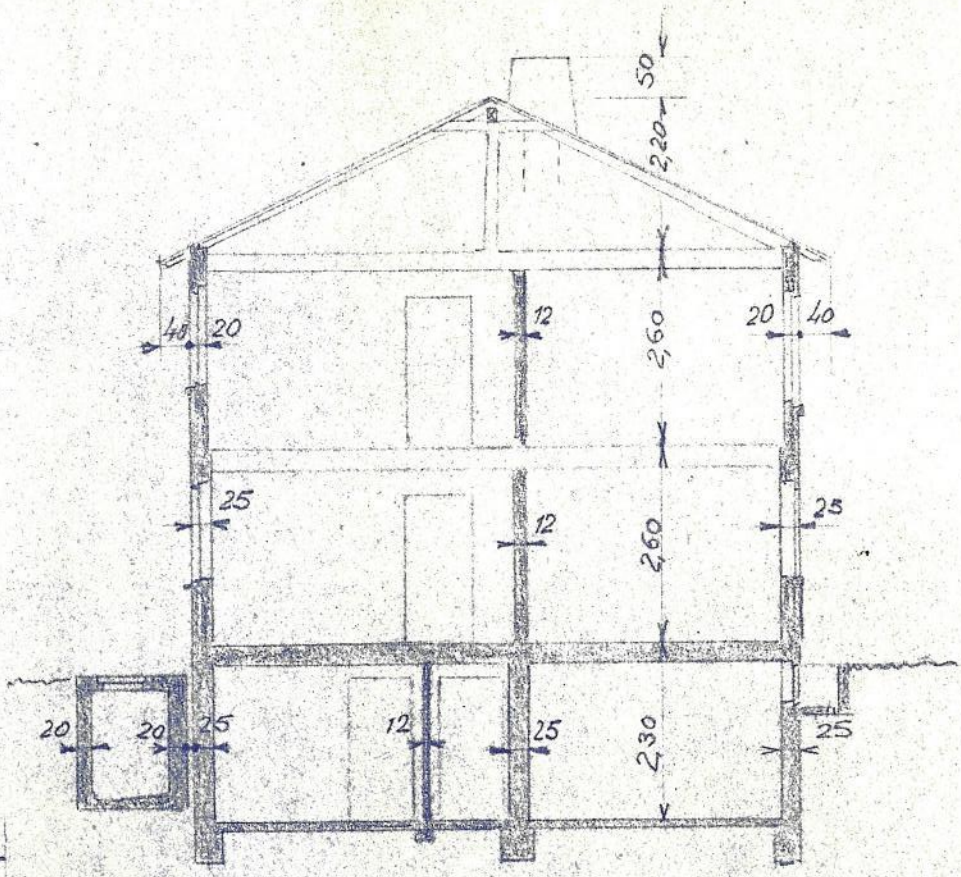
16,50



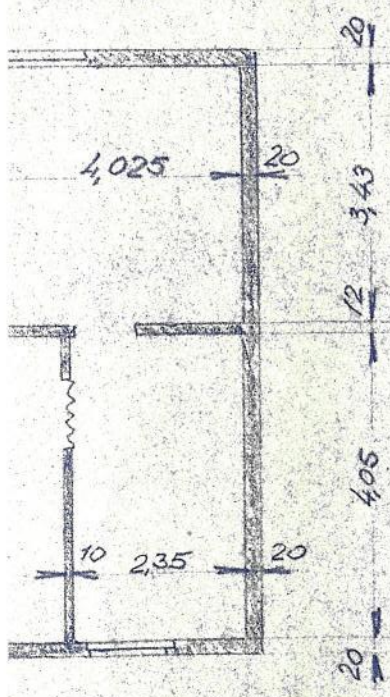
Erdgeschoss.  
Wohnfläche 46,3 m<sup>2</sup>



Obergeschoss  
 Wohnfläche: 47,36m<sup>2</sup>



Querschnitt



Bebaute Fläche:  $132 \text{ m}^2$  : 2 =  $66 \text{ m}^2$   
 Umbauter Raum:  $1040 \text{ m}^3$  : 2 =  $520 \text{ m}^3$   
 Wohnfläche:  $187,32 \text{ m}^2$  : 2 =  $93,66 \text{ m}^2$

**DOPPELHAUS 175/3**  
 mit je 2 Wohnungen  
 M.: 1:100

15.9.1952 E.H.