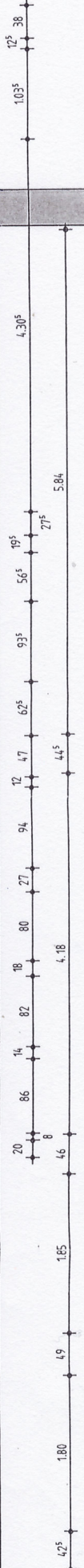
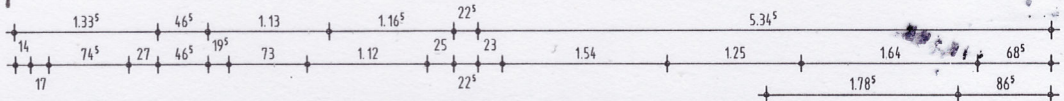
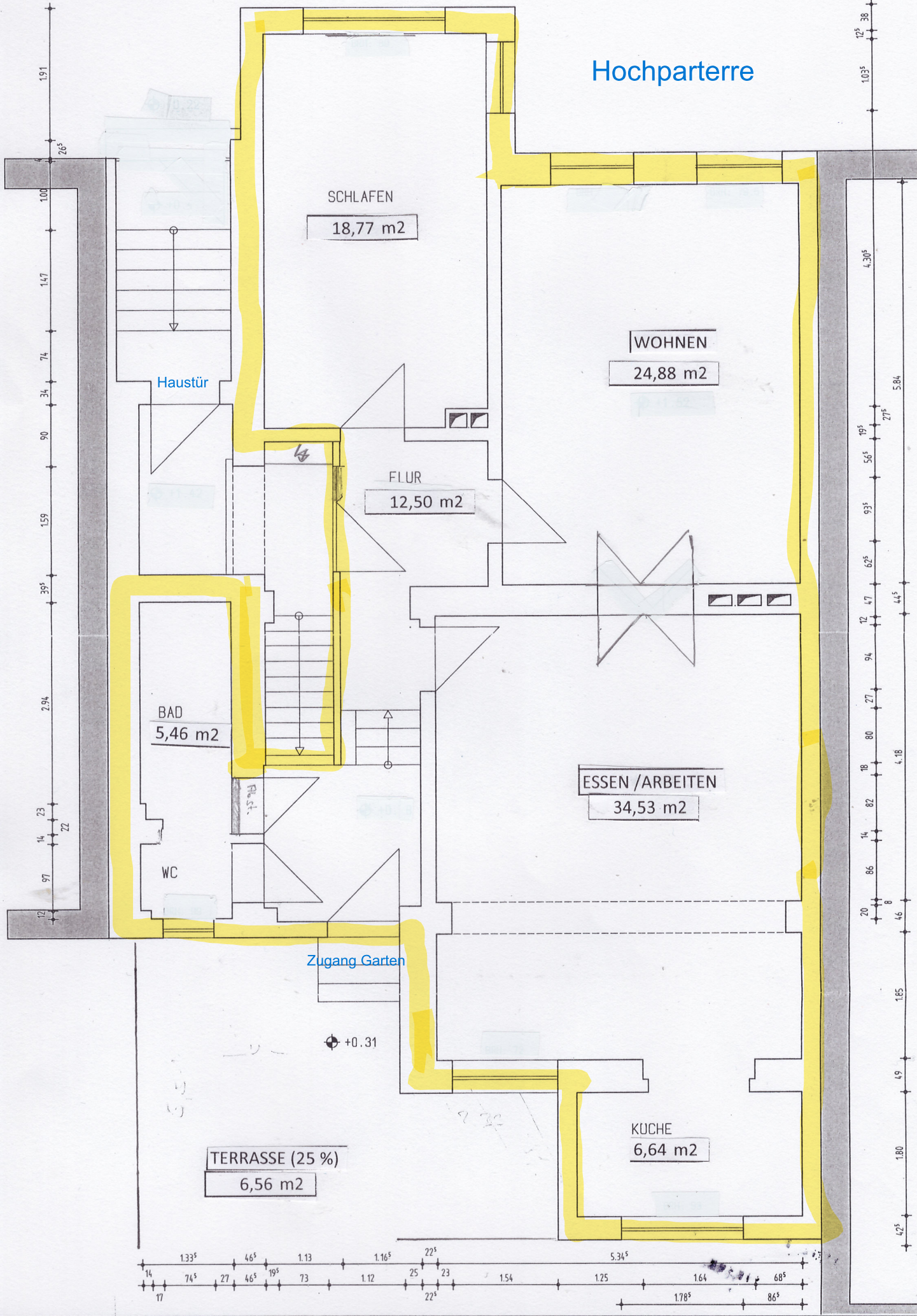
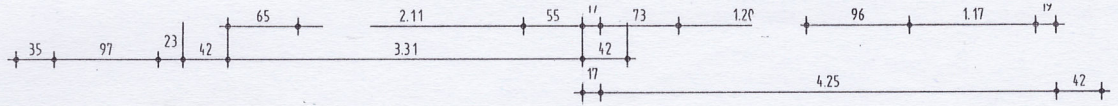


Hochparterre





1. OG

SCHLAFEN

18,87 m²

KÜCHE
ESSEN

25,73 m²

FLUR

12,84 m²

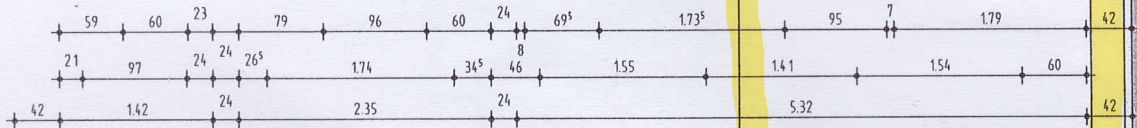
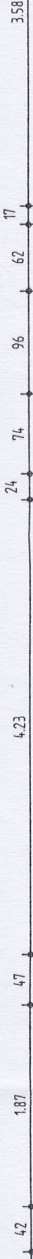
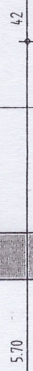
BAD

5,94 m²

WOHNEN /ARBEITEN

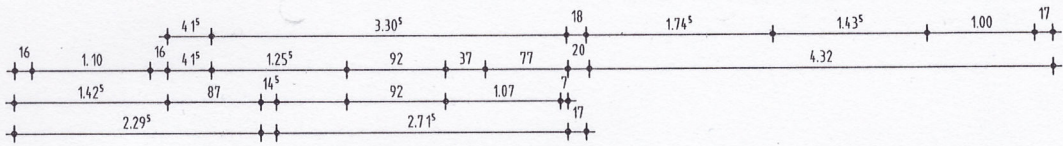
34,85 m²

Treppenhaus

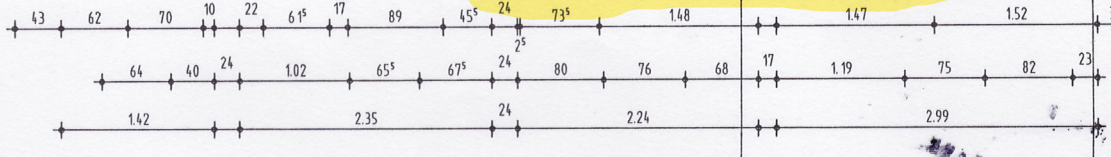
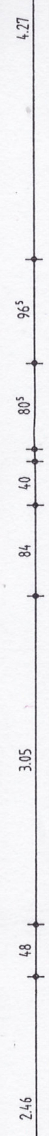
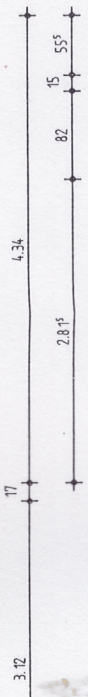
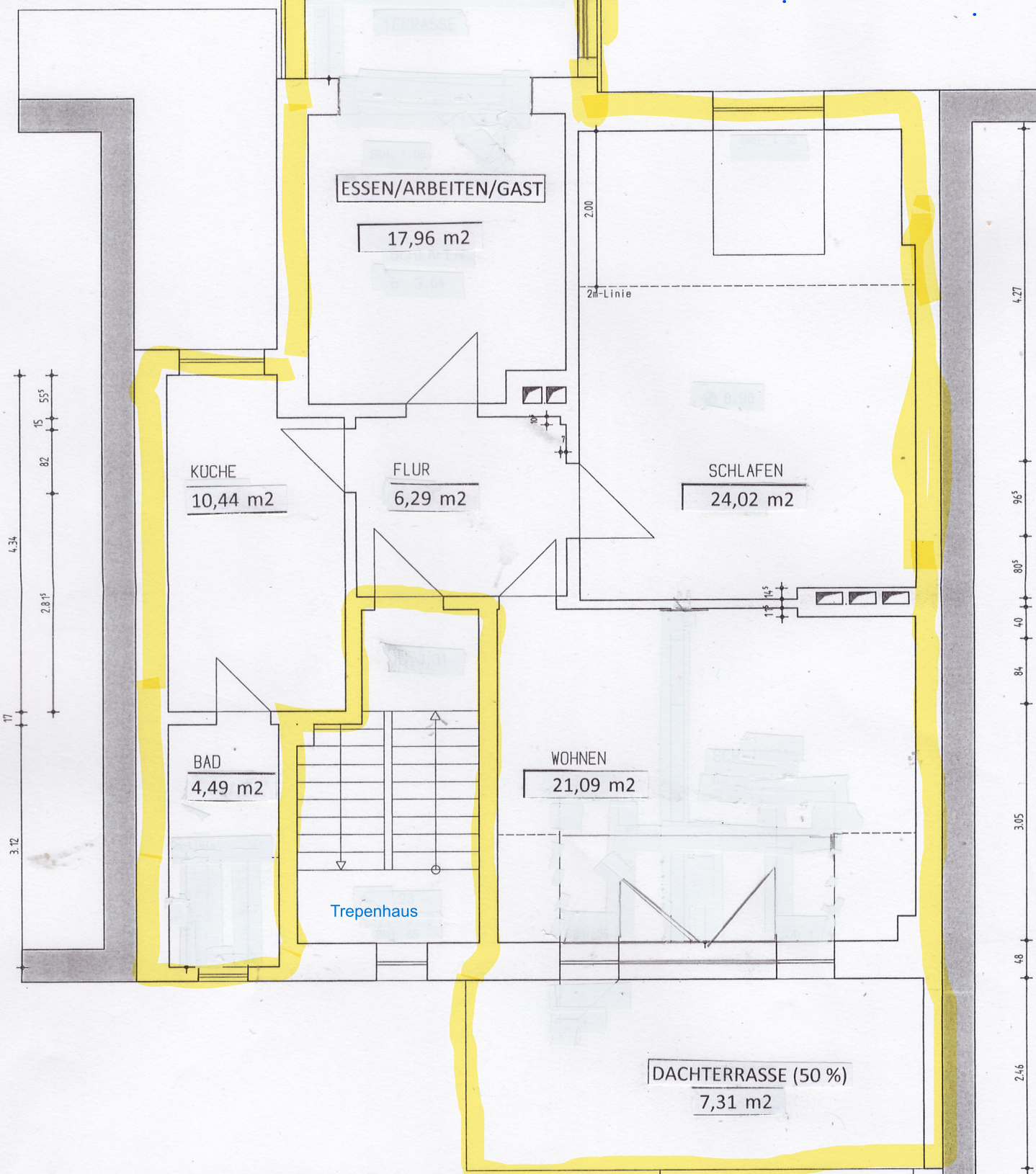


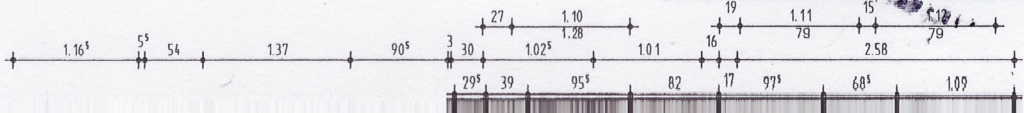
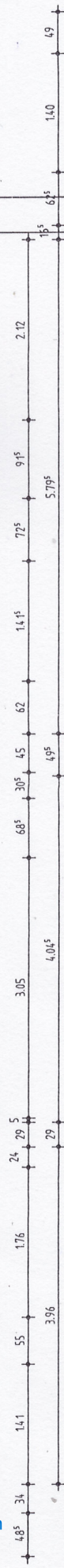
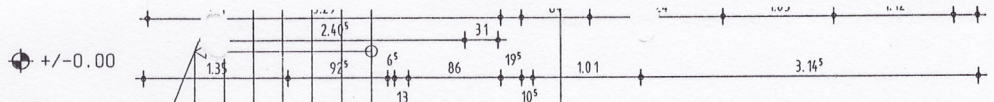
BALKON (50 %)

3,80 m²



2. OG





Souterrain

VORRAUM
4,03 m²

KÜCHE / ESSEN
11,94 m²

ZIMMER
25,70 m²

BAD
3,68 m²

KELLER

ANKLEIDE
1,76 m²

KELLERFLUR

zum EG

HEIZUNG

KELLER

WASCHEN

KELLER

KELLER

KELLER

KELLER

Ausgang zum Garten