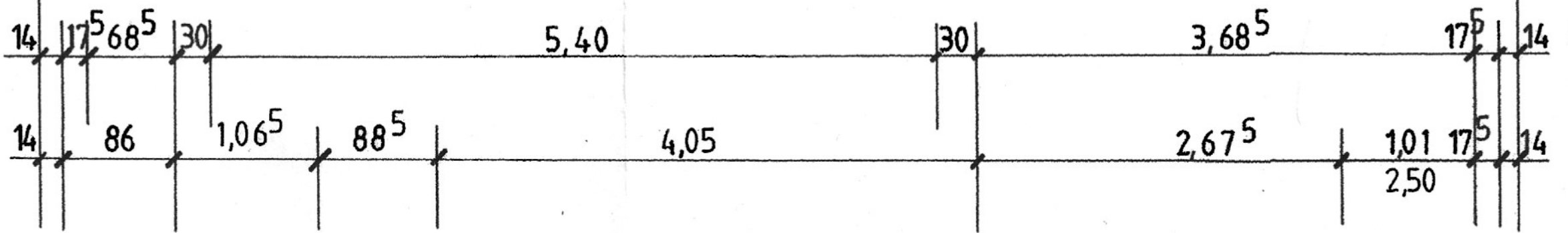


11,00

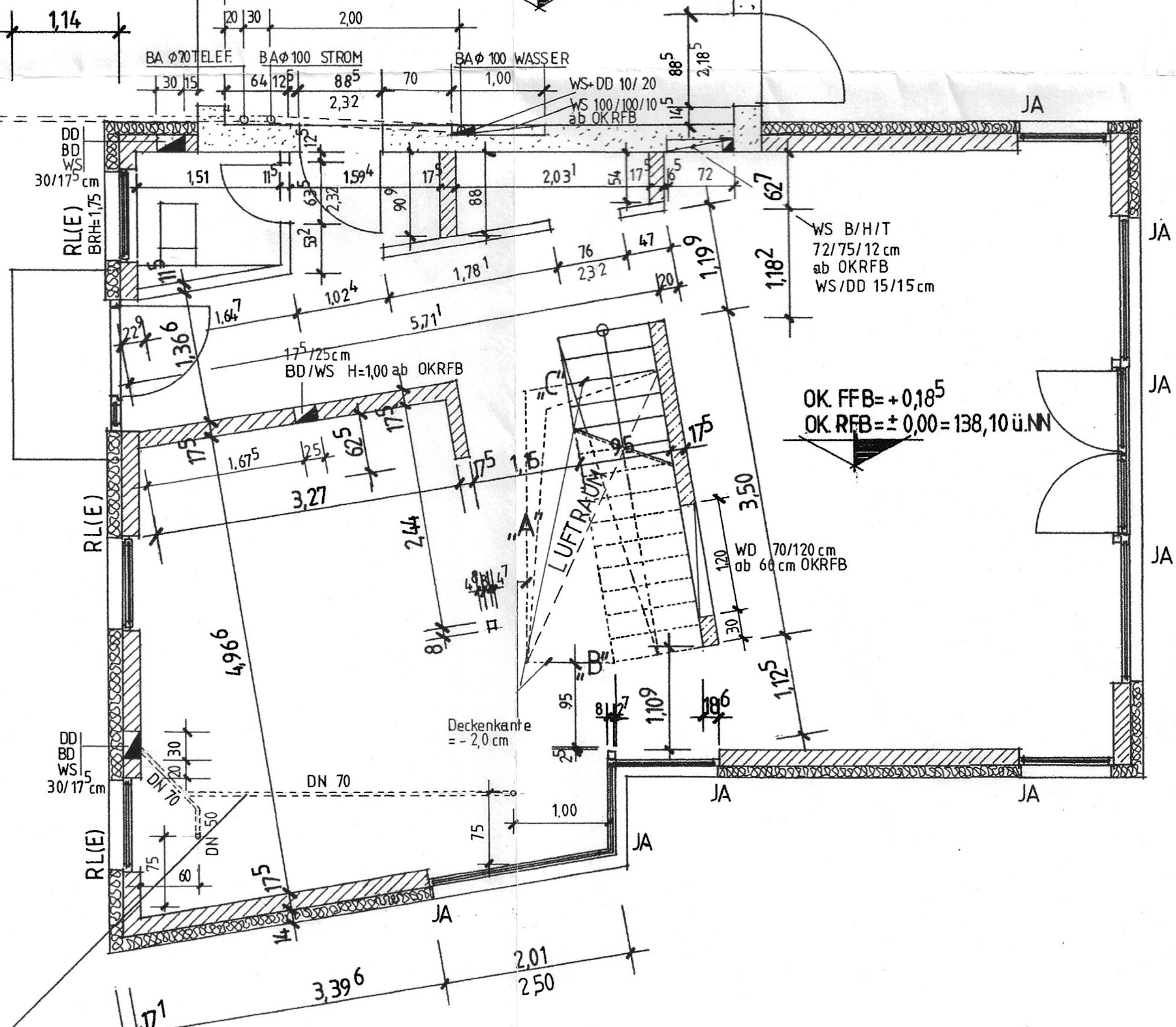
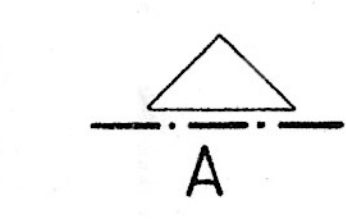
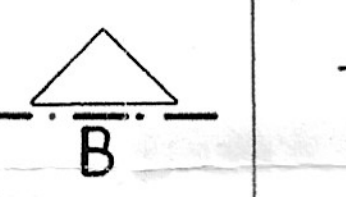


LEERROHRE BIS 20cm über OKRFB (RADIUS= 100 m)

DN 100 WASSER T= -1,20
 DN 100 STROM T= -0,80
 DN 70 TELEFON T= -0,60

OK. FFB= 0,18⁵
 OK RFB= +0,13 = 138,23

BD/DD/WS 50/20 cm Leerrohr Zul. Wärmepumpe
 nach Angabe Heizungsbauer



Leitungen in Decke ü. EG
 n, min. 2% Gefälle!

