

ODEBORN

ZUGANG ODEBORN

NORD

85

84

ABSTR.  
5.91 m<sup>2</sup>

GARAGE  
24.04 m<sup>2</sup>

GRUBE  
VERFÜLLT

LH.: = 2,02 m  
FF.: = 2,23 m

12 St.  
22,8/22,2

FLUR KG  
8.48 m<sup>2</sup>

AR.  
1,4 m<sup>2</sup>

RÜCKSTAUKLAPPE

RINNE

RINNE

RR

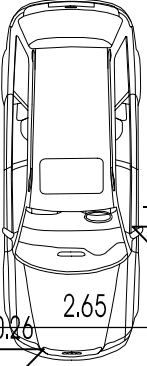
KELLER  
9.02 m<sup>2</sup>

WASCHKÜCHE  
11.65 m<sup>2</sup>

KELLER/  
HEIZUNG  
18.63 m<sup>2</sup>

KELLER  
9.79 m<sup>2</sup>

WASSER  
GAS  
STROM



GARAGE

-0.20

9.12

4.90

3.60

-0.02

2.88

4.25

-0.01

-0.03

4.45

3.40

BÜRGERSTEIG

-0.01

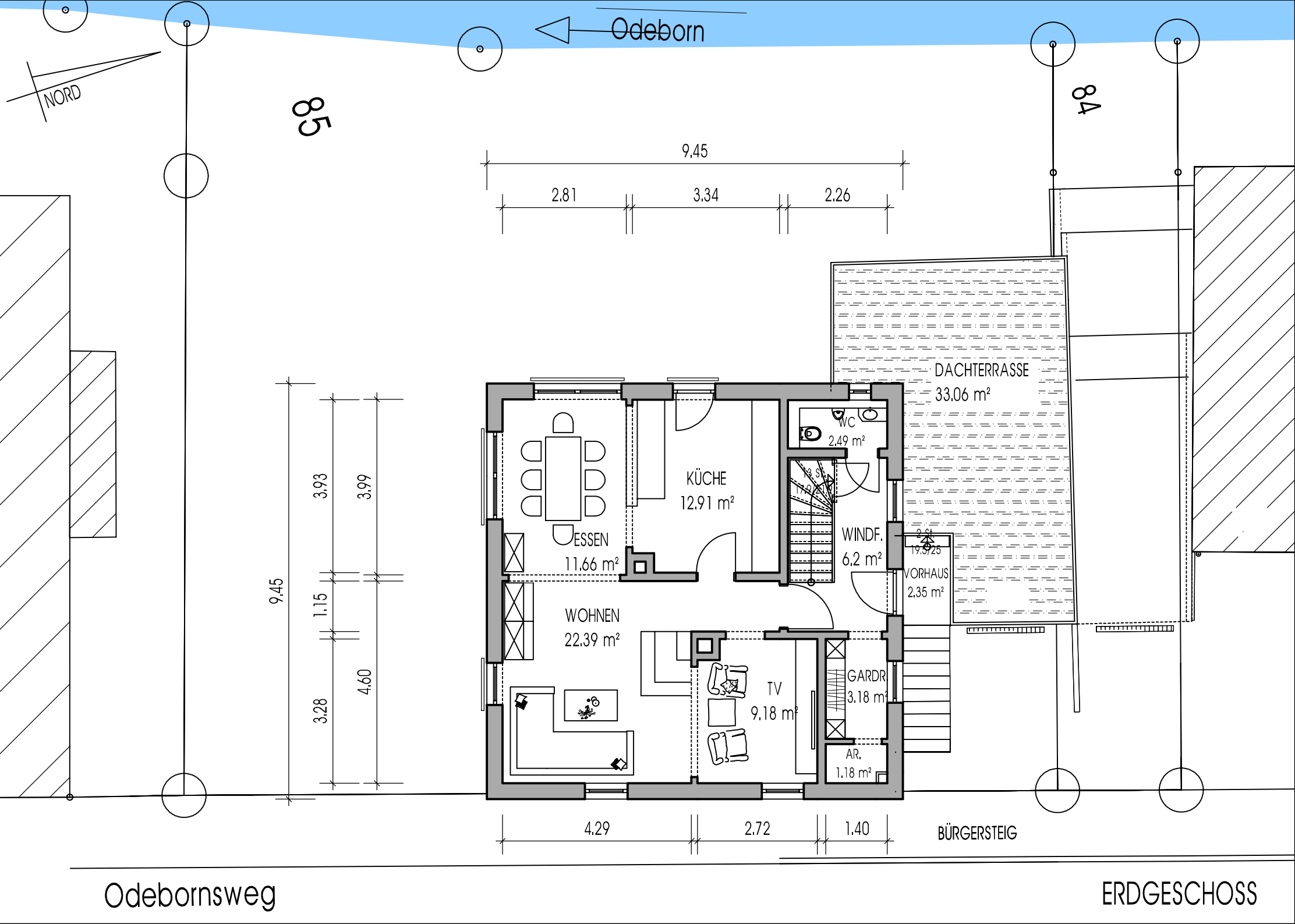
-0.02

Odebornsweg

-0.16

9.12

KELLERGESCHOSS



Odeborn

NORD

85

84

9.45

2.81

3.34

2.26

9.45

3.93

3.99

1.15

4.60

3.28

KÜCHE  
12.91 m<sup>2</sup>

ESSEN  
11.66 m<sup>2</sup>

WOHNEN  
22.39 m<sup>2</sup>

TV  
9.18 m<sup>2</sup>

WC  
2.49 m<sup>2</sup>

WINDF.  
6.2 m<sup>2</sup>

VORHAUS  
2.35 m<sup>2</sup>

GARDR.  
3.18 m<sup>2</sup>

AR.  
1.18 m<sup>2</sup>

DACHTERRASSE  
33.06 m<sup>2</sup>

4.29

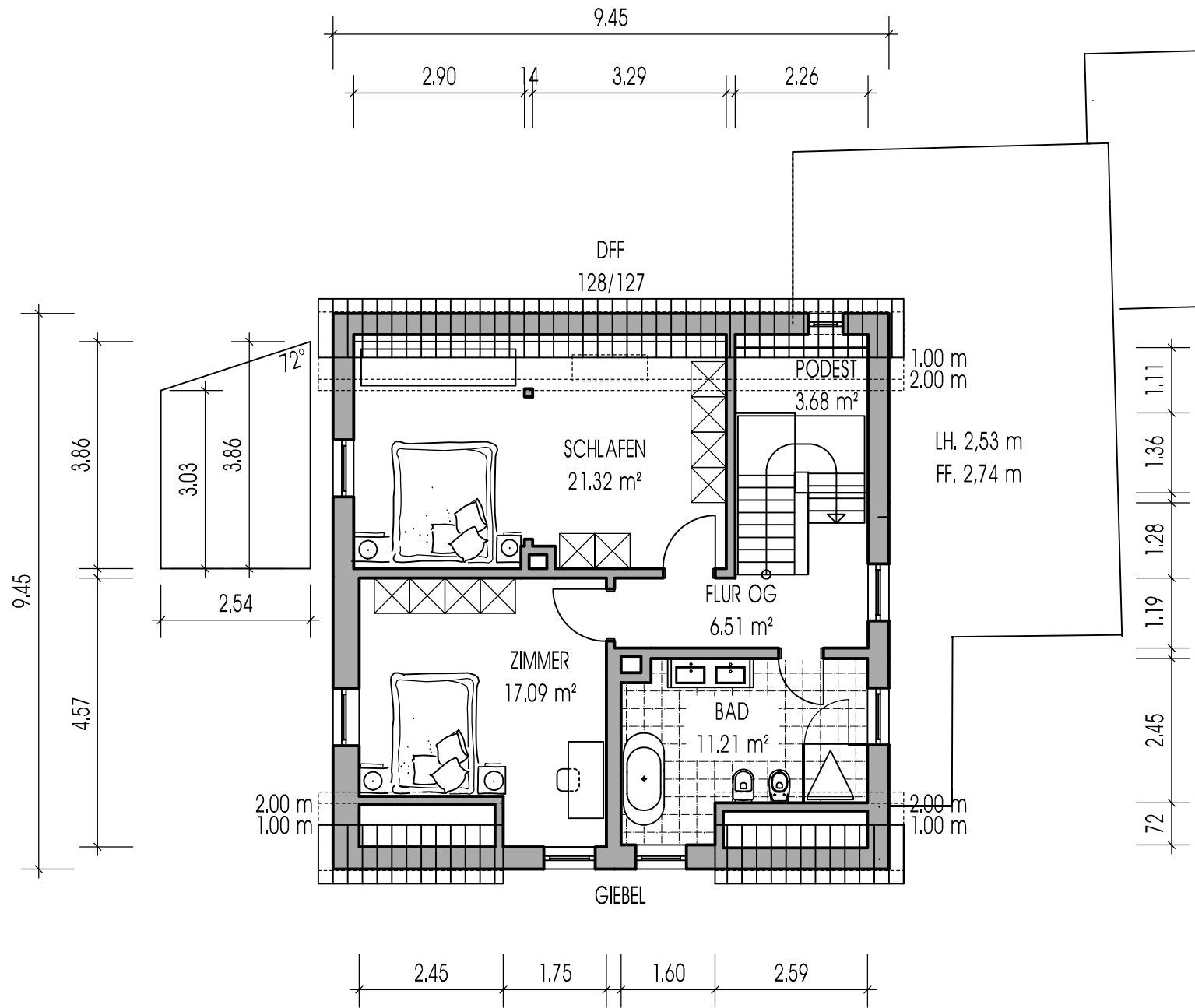
2.72

1.40

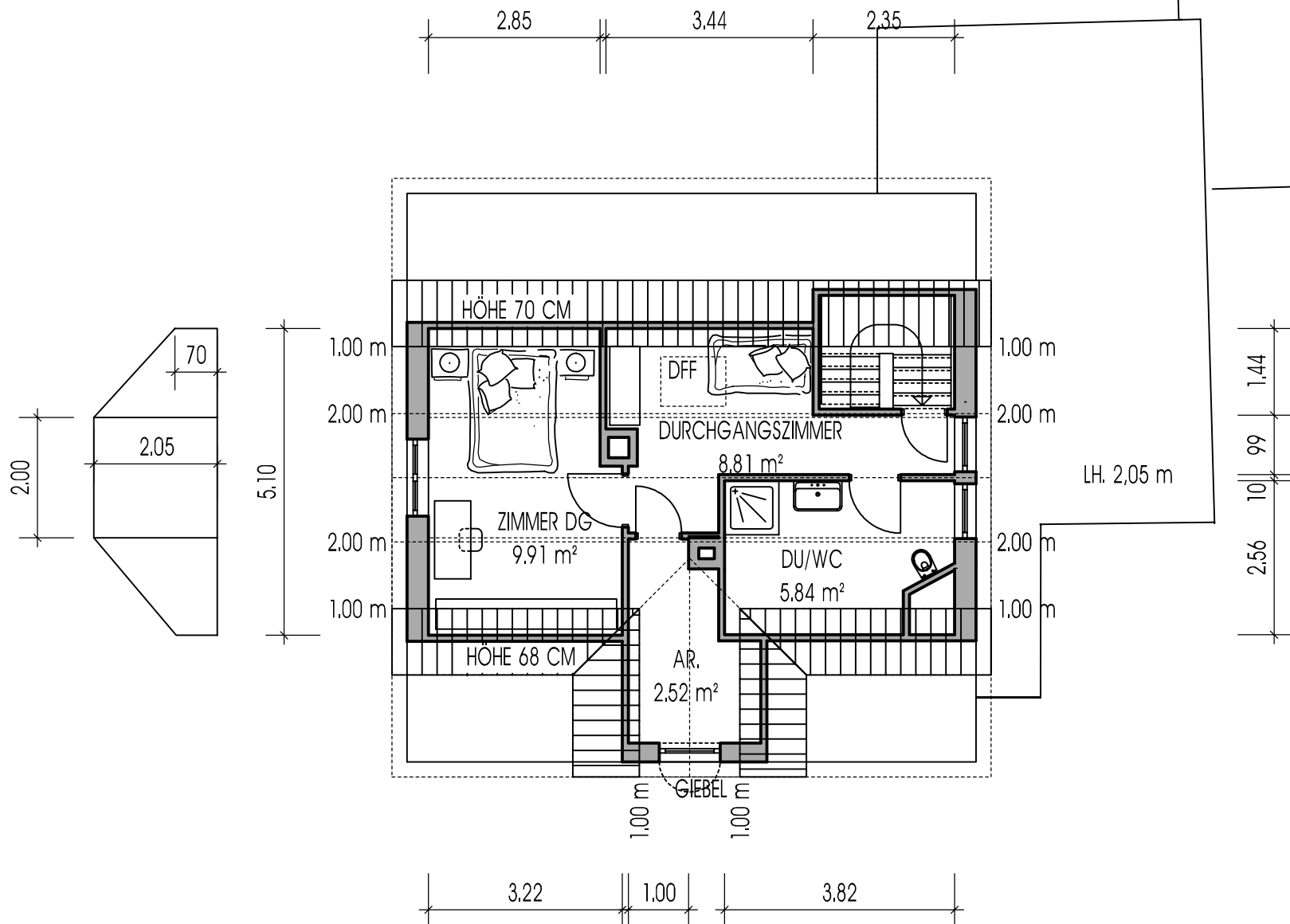
BÜRGERSTEIG

Odebornsweg

ERDGESCHOSS



OBERGESCHOSS



DACHGESCHOSS