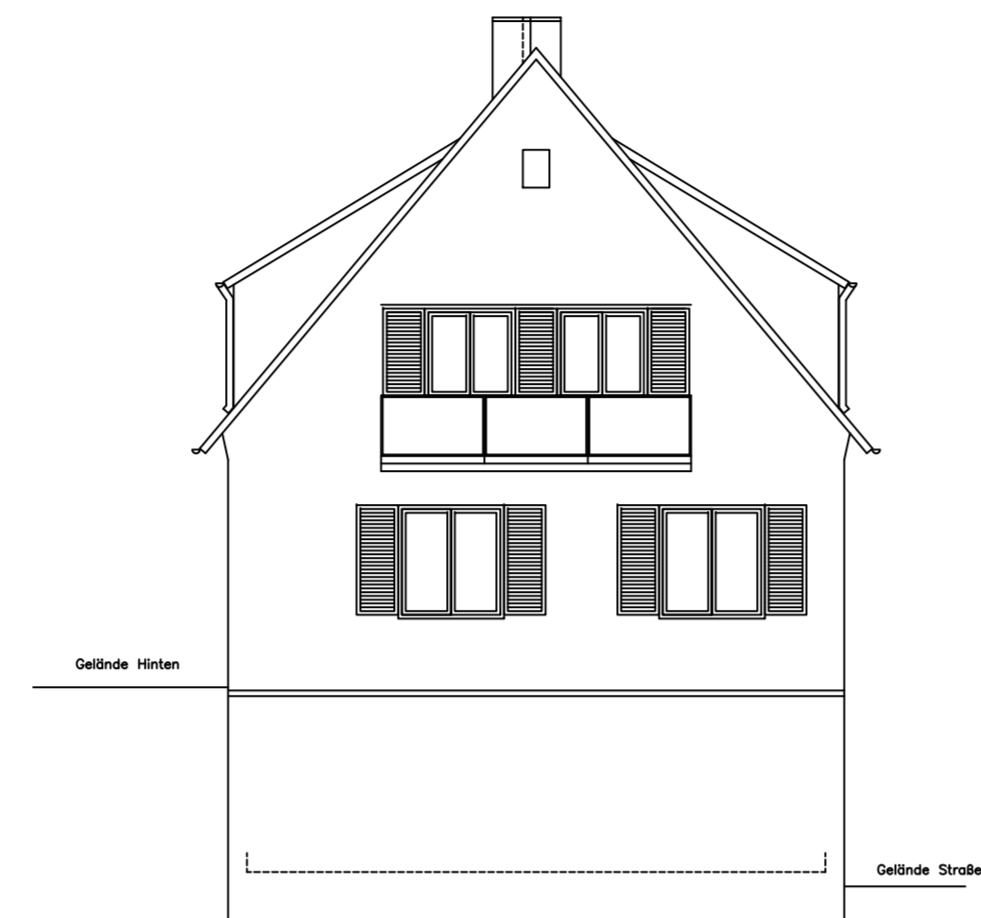
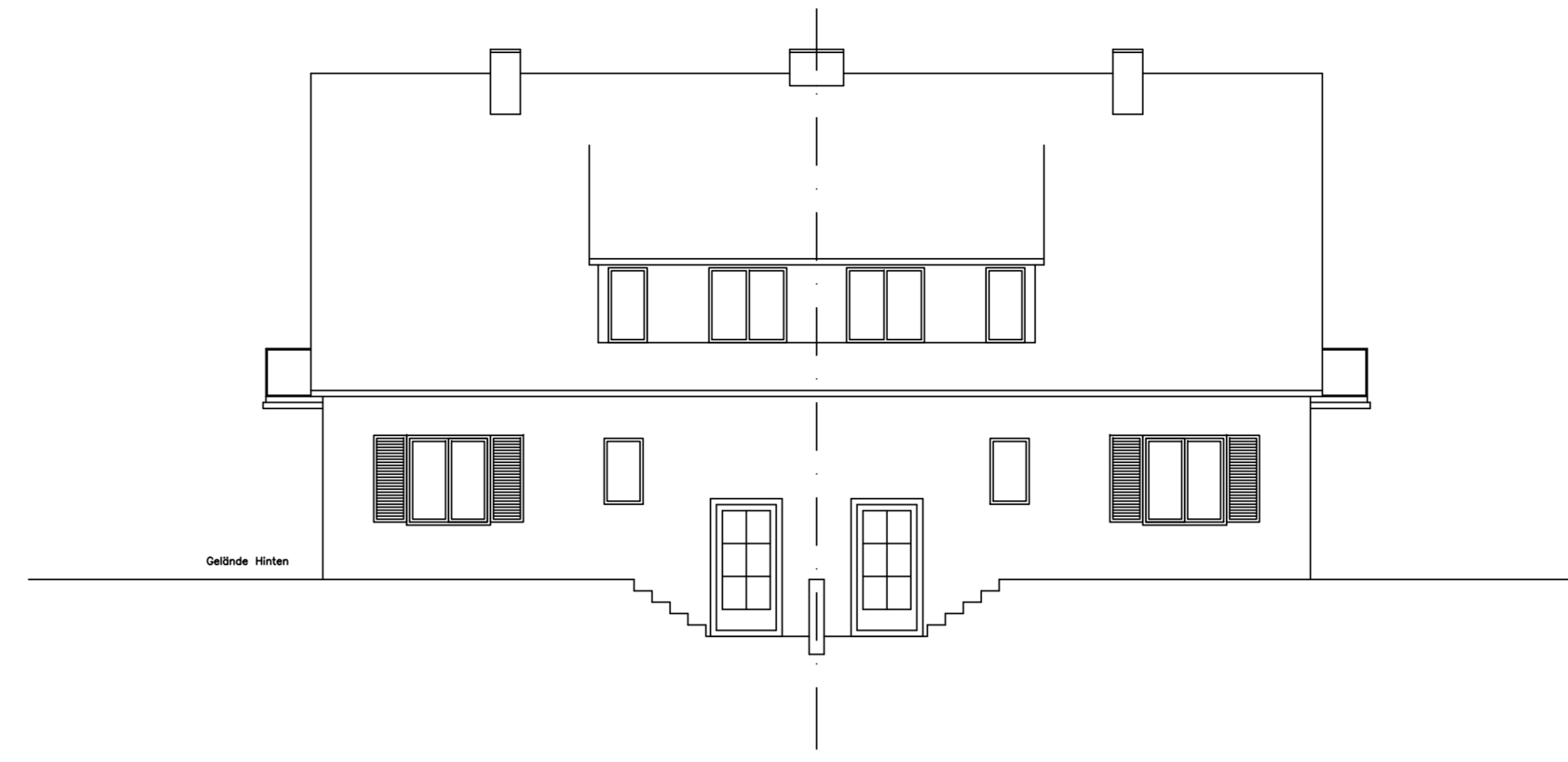


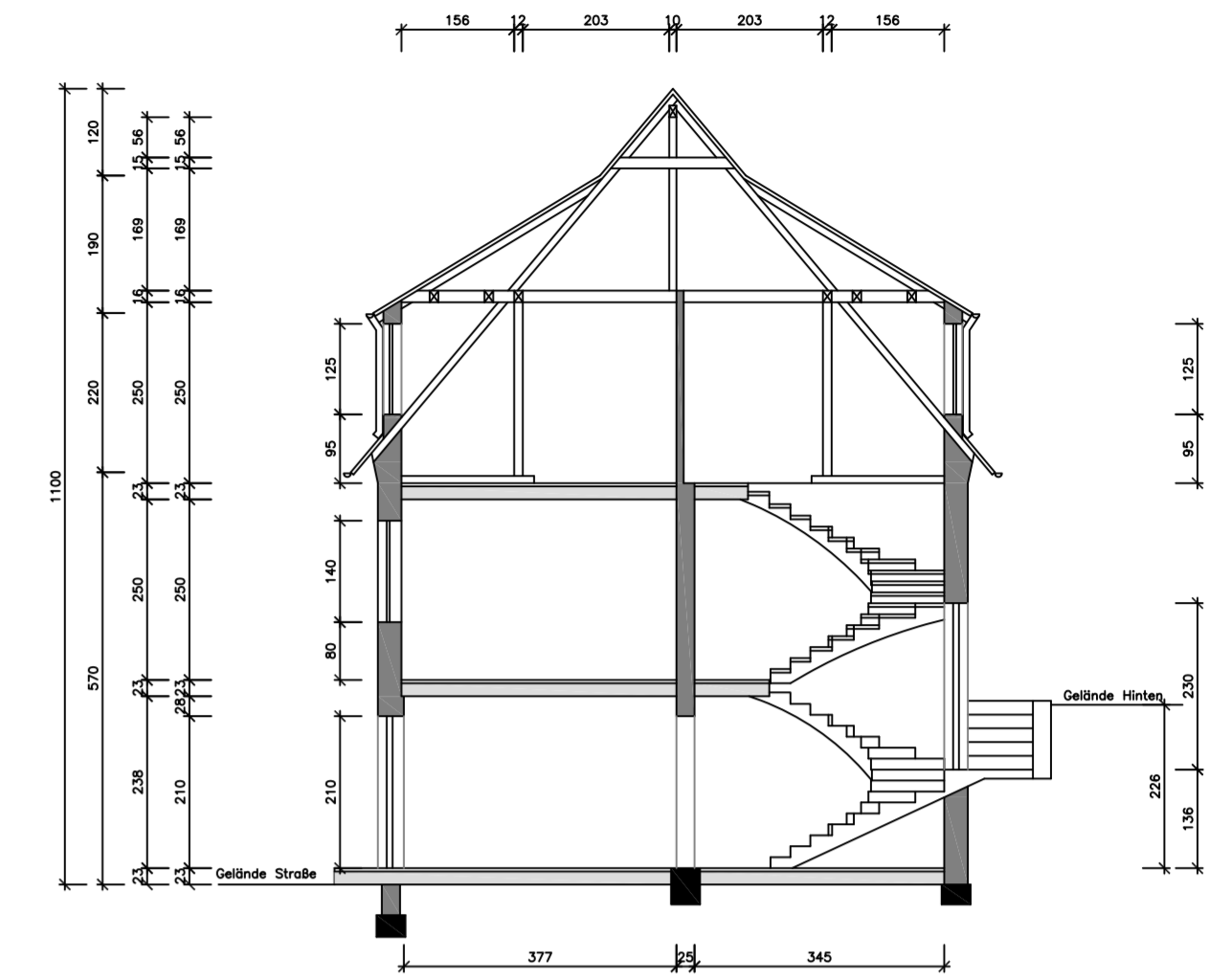
Ansicht Straße



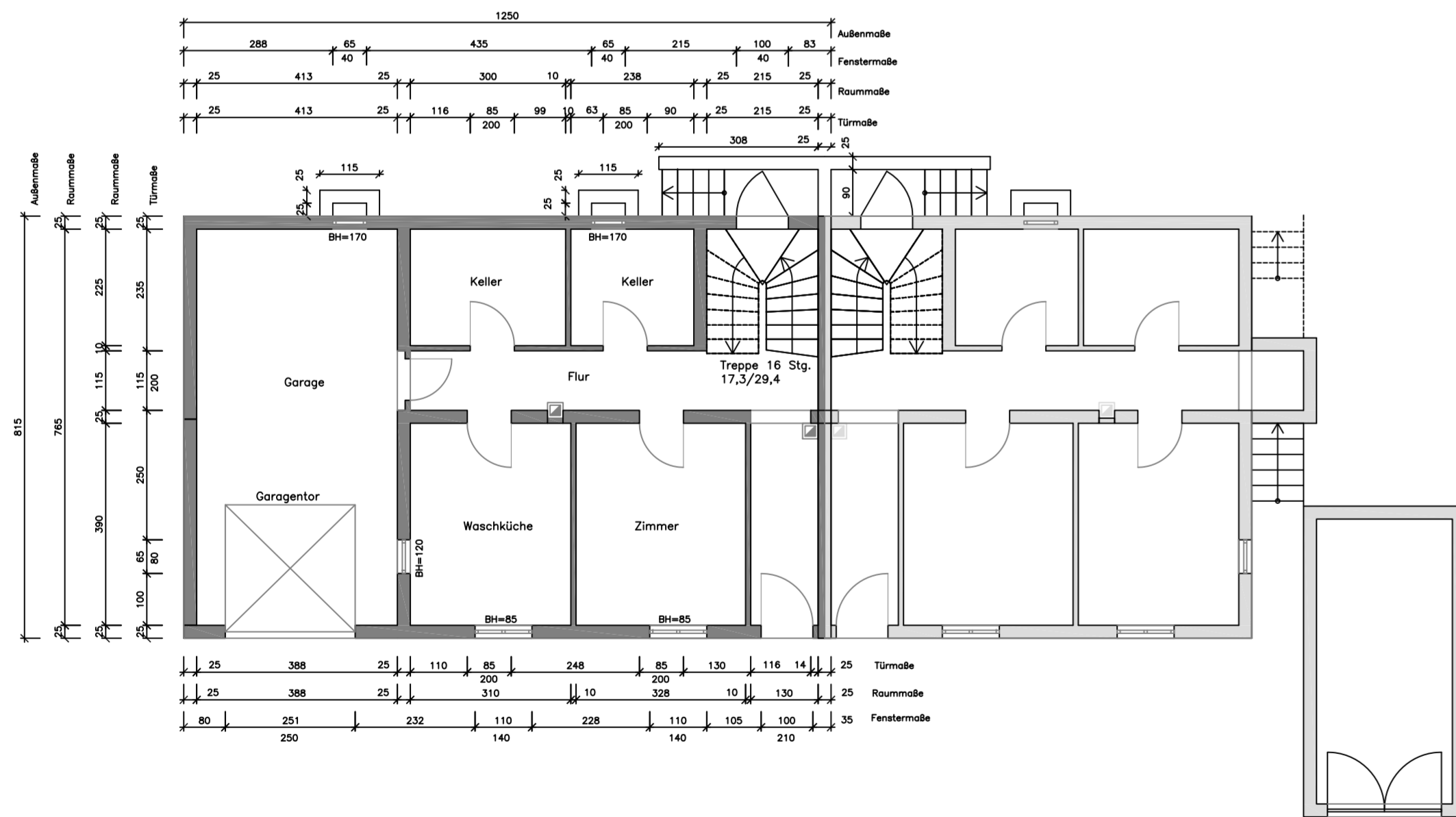
Ansicht Seite



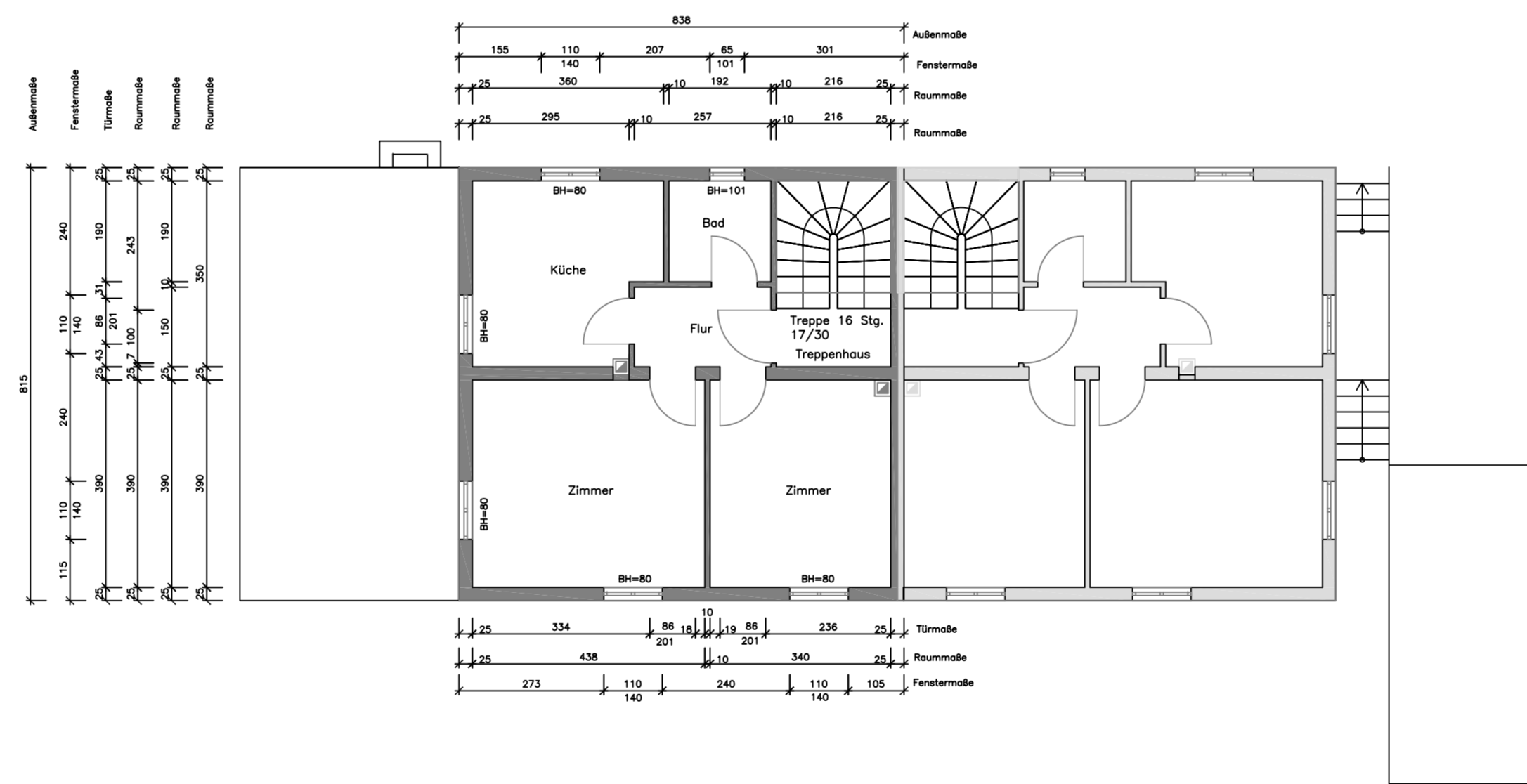
Ansicht Hinten



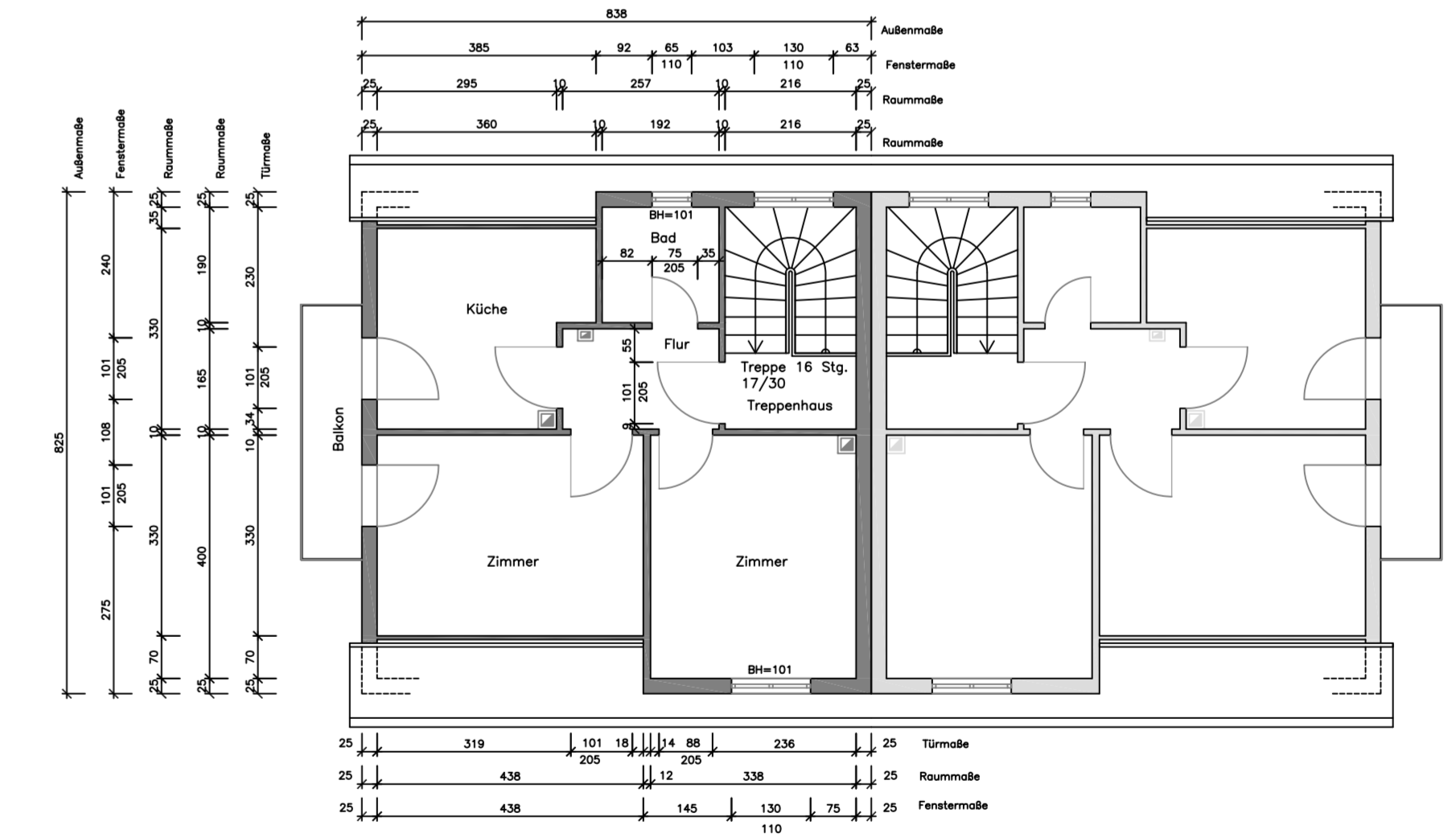
Schnitt Quer



Kellergeschoss



Erdgeschoss



Obergeschoss

Wohnhaus mit Garage	Besitzer: Kurt Sämmling-Dudweiler
Am Steinbruch 11	Maßstab 1 : 100
	Stand: 20.12.2013