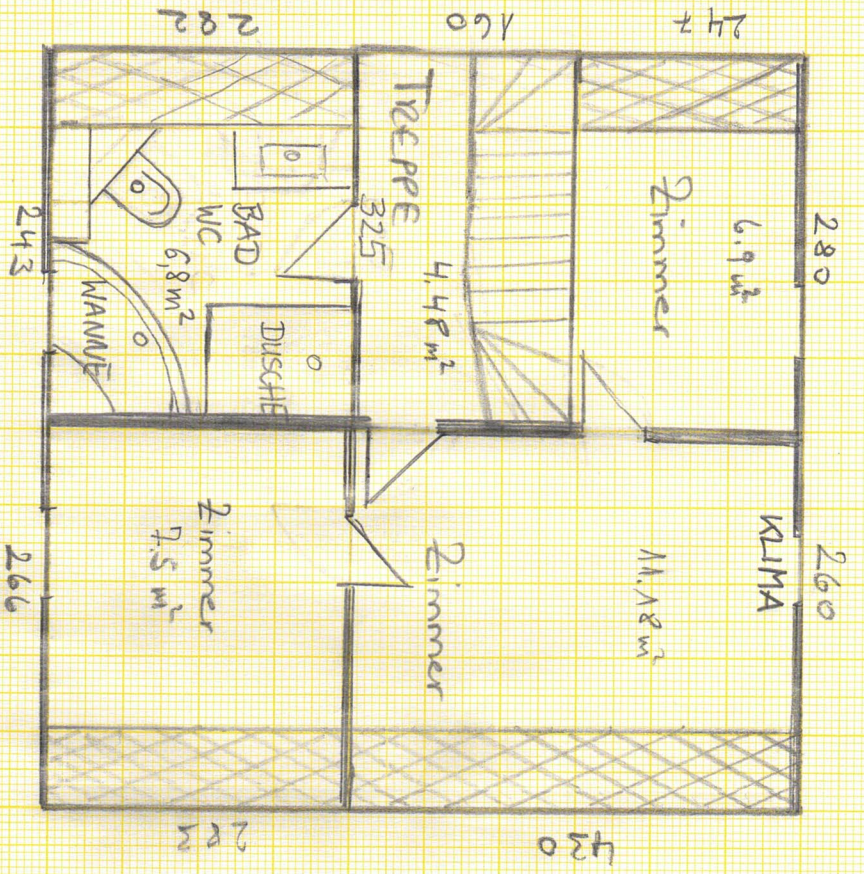


DG:

Heizungsraum
DACHBODEN



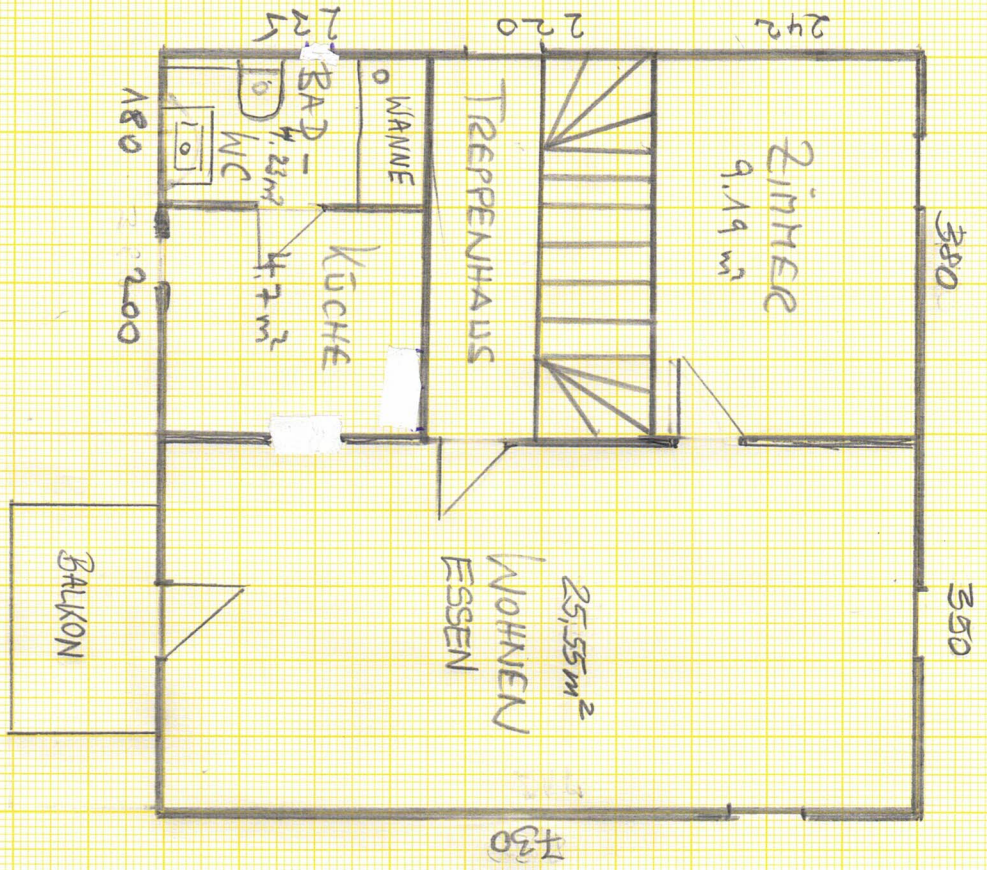


TEILSCHRÄGE

3. OG

32.43 m²

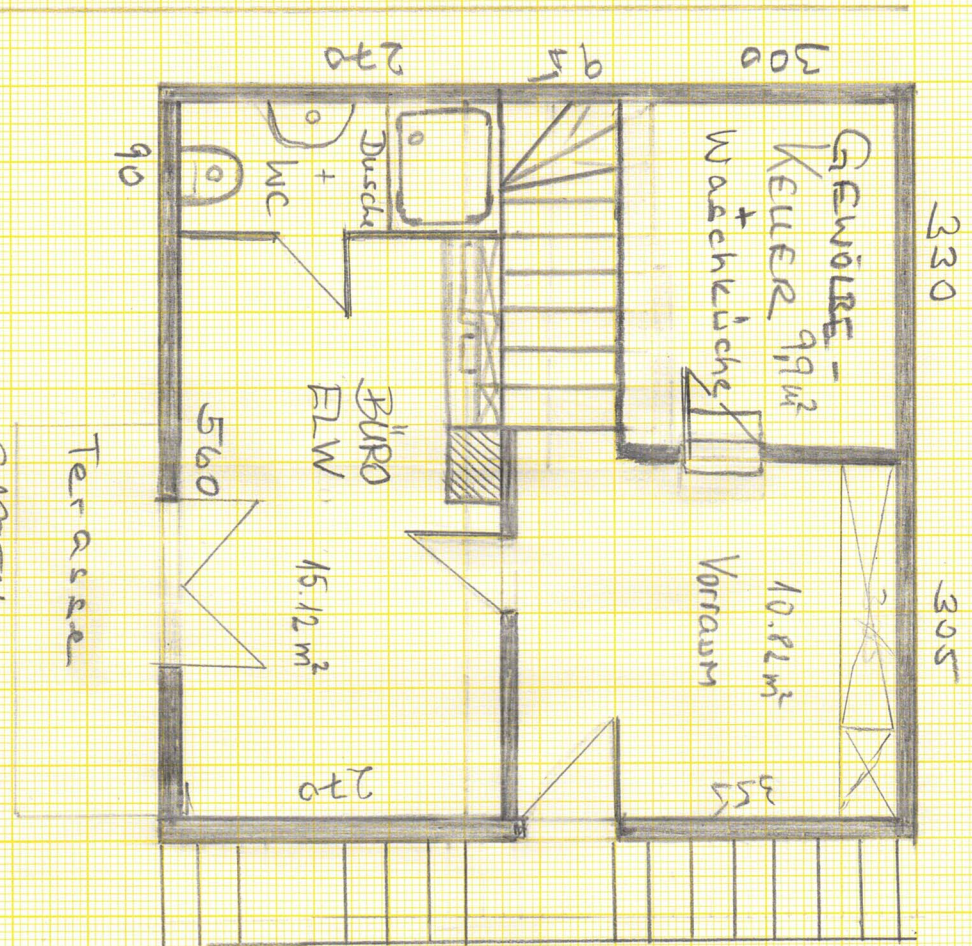
22
21
20
19
18
17
16
15
14
13
12
11
10
9
8
7
6
5
4
3
2
1



10G: 2 ZW

45,0 m²

1 2 3 4 5 6 7 8 9 10 11 12 13 14 15 16 17 18 19 20 21 22



EG: Vorraum 10.82

Keller 9.90 m^2

Büro/ELW 17.55 m^2

$= 38.27\text{ m}^2$