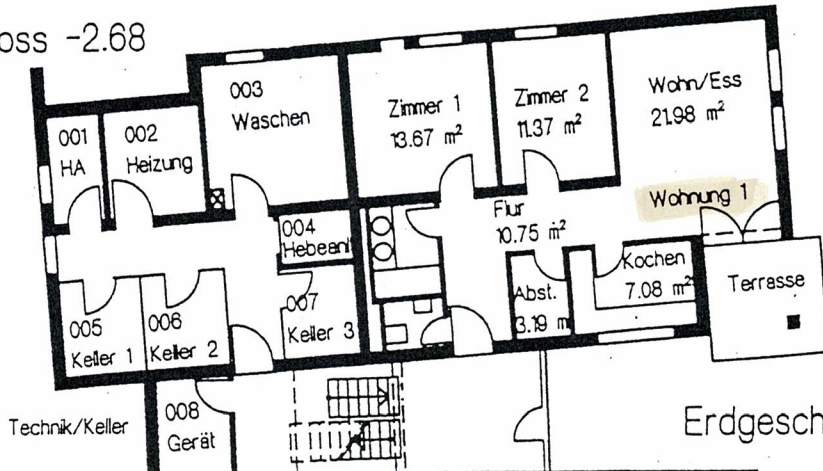
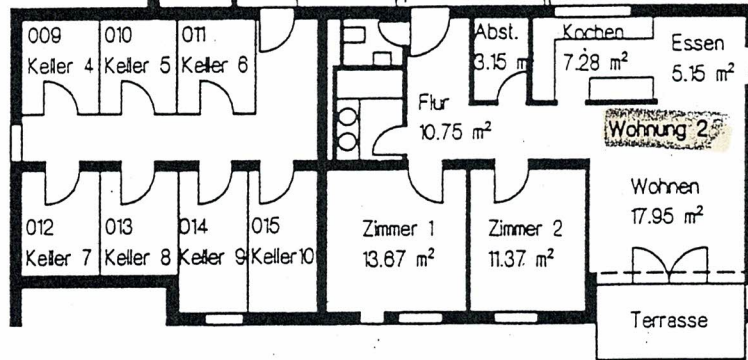


Untergeschoss -2.68

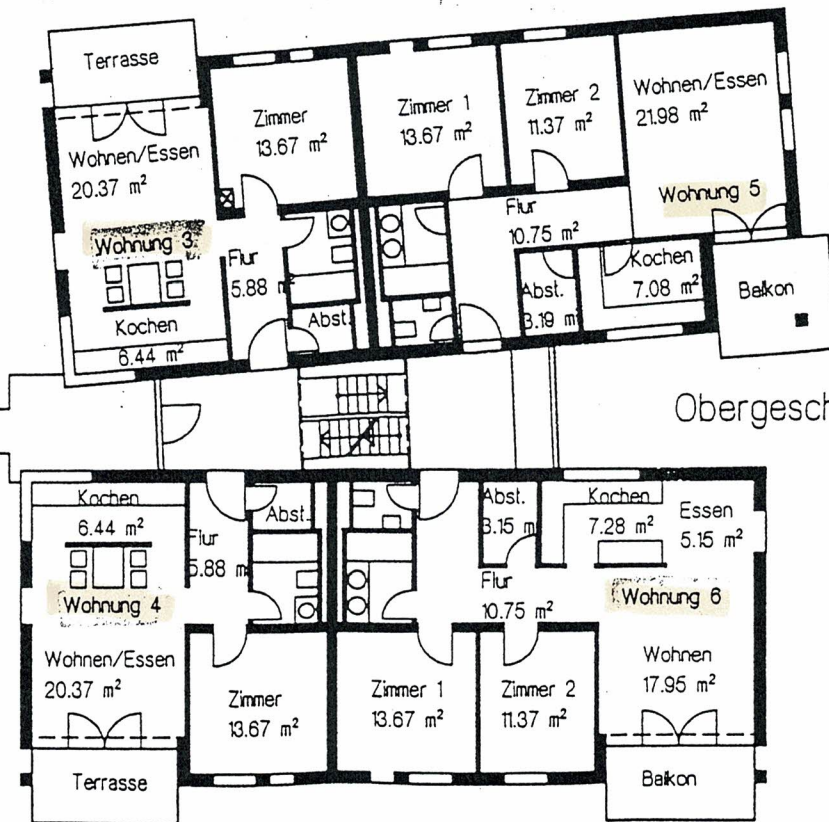


Erdgeschoss -1.61



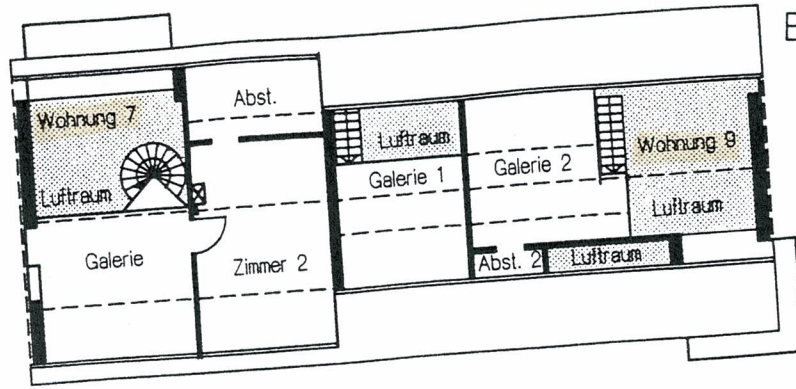
GRUNDRISSE Masstab 1/200

Erdgeschoss ±0.00



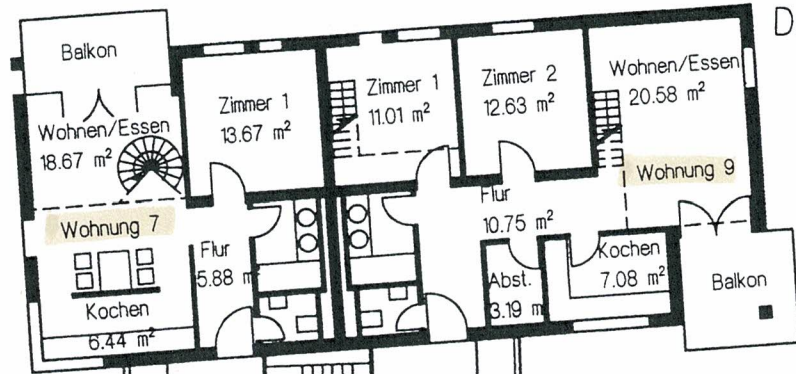
Obergeschoss +1.07

Dachgeschoss +5.36



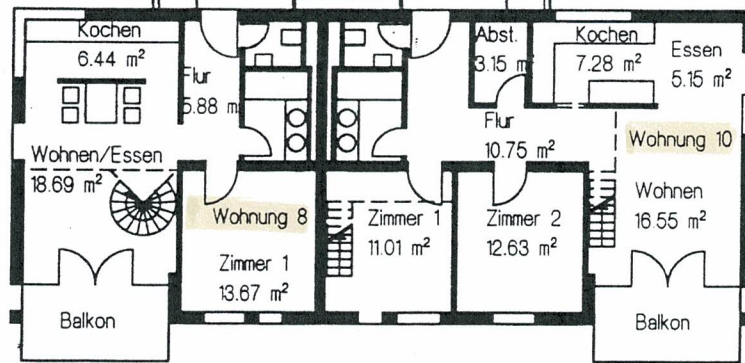
Balkenlage +6.33

Obergeschoss +2.68

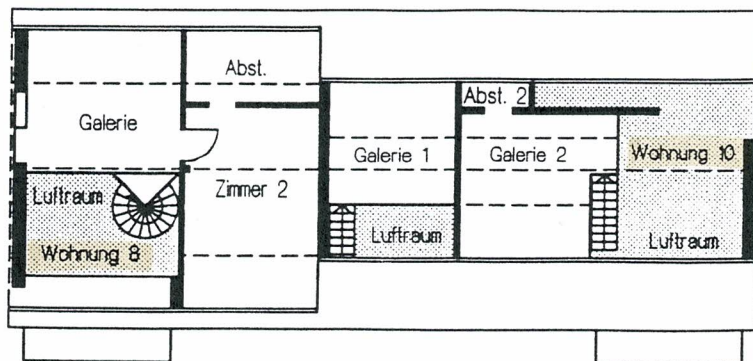


Dachgeschoss +3.75

GRUNDRISSE Masstab 1/200



Dachgeschoss +5.36



Balkenlage +6.33