

SW DN 100

Keller / Lager  
12.14 m<sup>2</sup>



OK FFB = - 2,54m

OK RFB = - 2,68m

WT

WM

SW DN 100

100/125

Telefon  
Wasser  
Strom

Waschraum  
7.56 m<sup>2</sup>



SW DN 100

15 StG  
17.6/26.3

Kellerflur  
5.27 m<sup>2</sup>



BRH 1,50 m

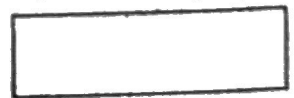
Gästezimmer  
18.26 m<sup>2</sup>

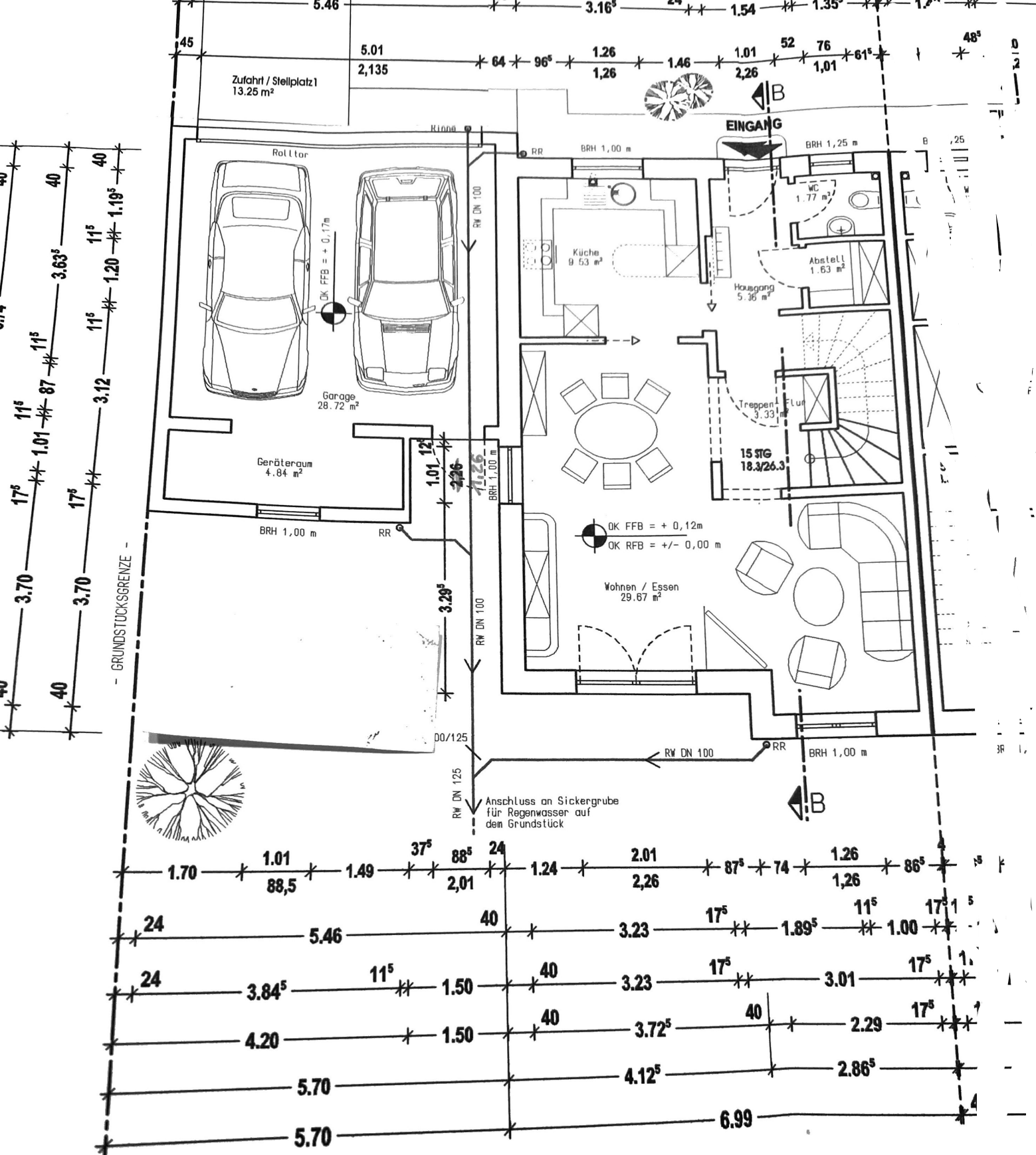
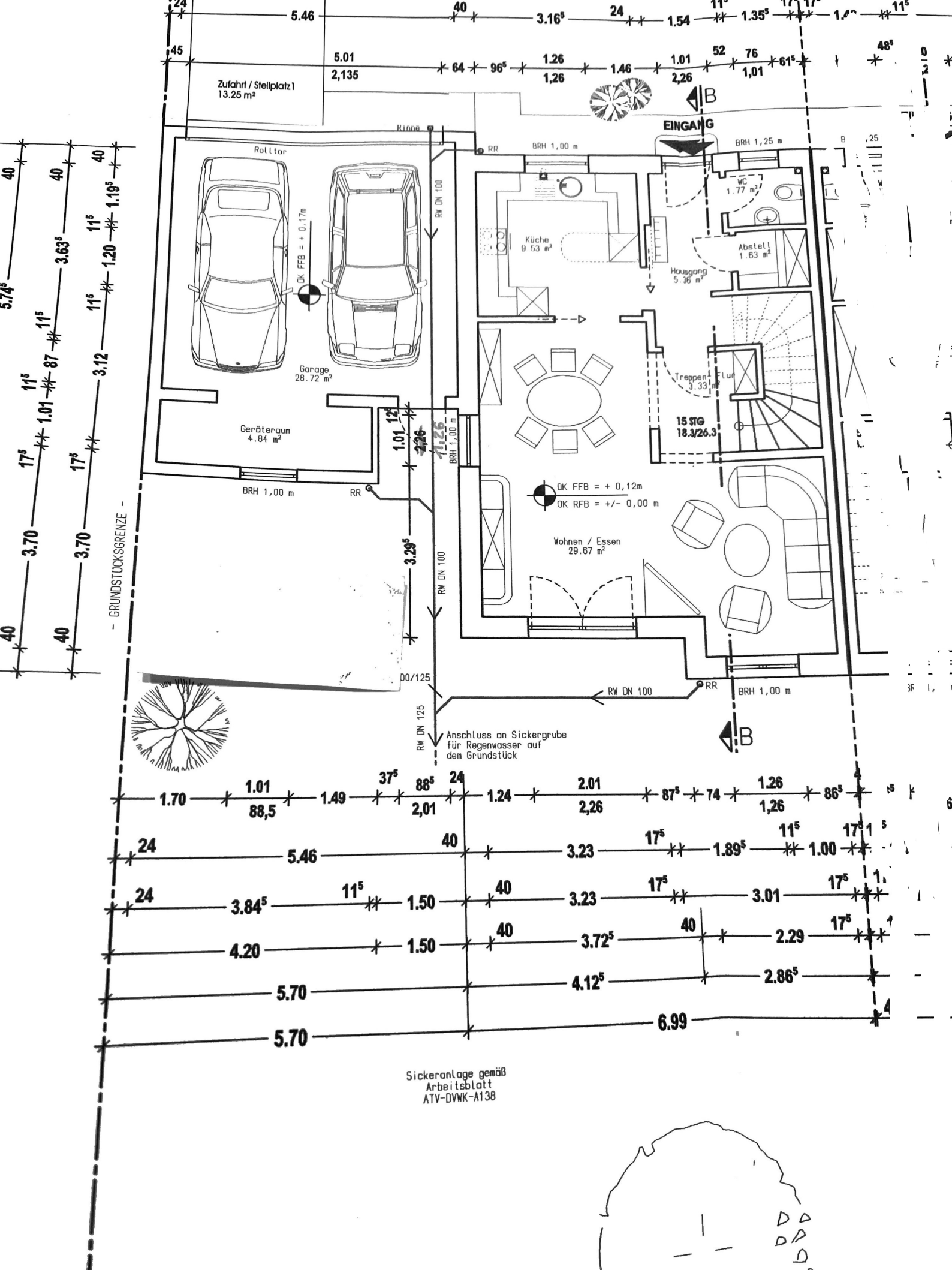
Strom  
Zählerkasten

SW DN 100

Haustechnik  
8.47 m<sup>2</sup>

Sohle-Wärmepumpe

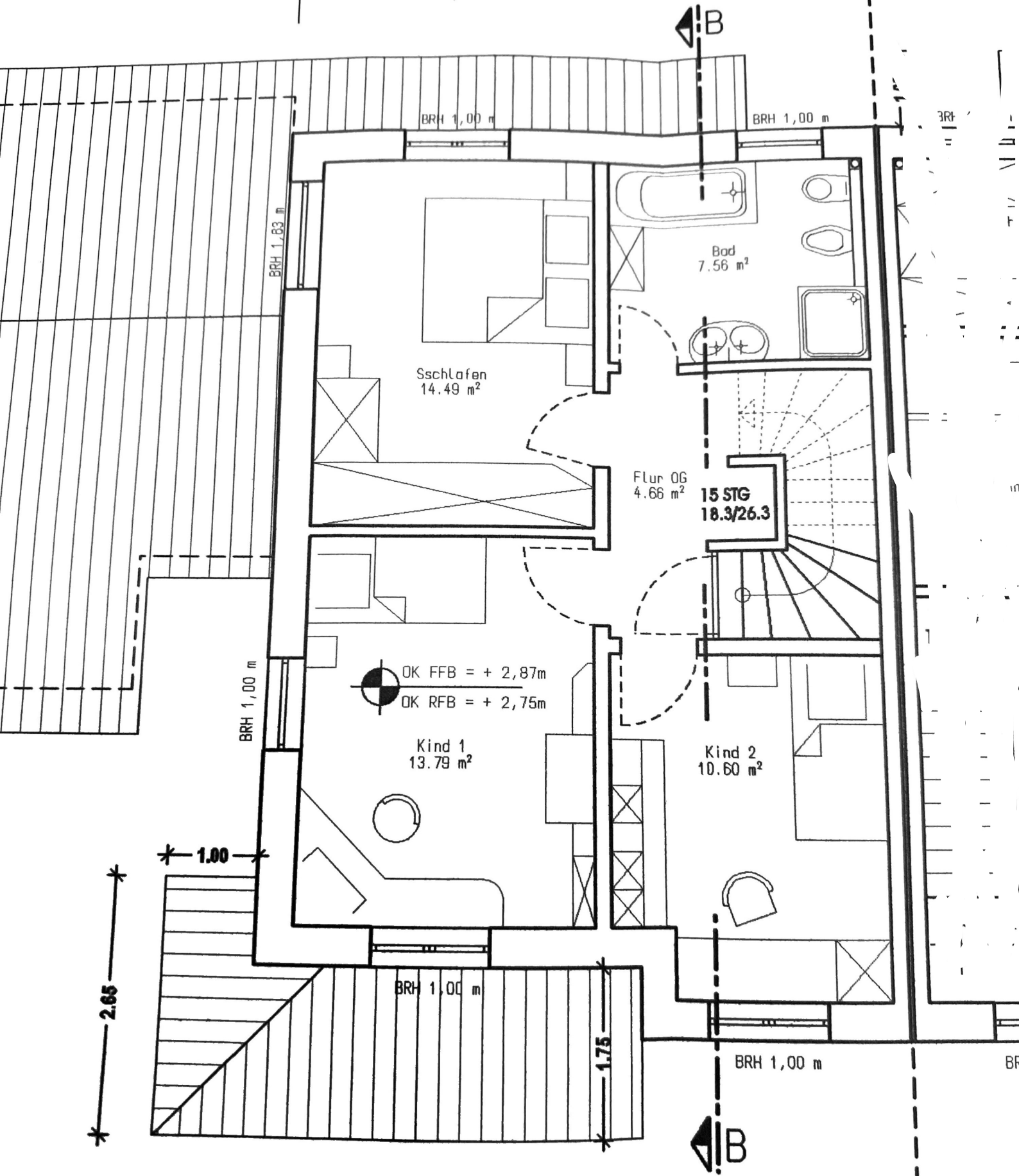




Sickeranlage gemäß  
Arbeitsblatt  
ATV-DVWK-A138



1.36<sup>5</sup> 1.26 2.74 1.01 61<sup>5</sup>  
1,26 1,26



1.24 1.26 1.62<sup>5</sup> 74 1.26 86<sup>5</sup> 86<sup>5</sup>  
1,26 1,26

